

# THE DIAMOND RANGE



## Consumer Units and Circuit Protection



18TH EDITION  
COMPLIANT



COMPREHENSIVE  
WARRANTIES

UK  
CA

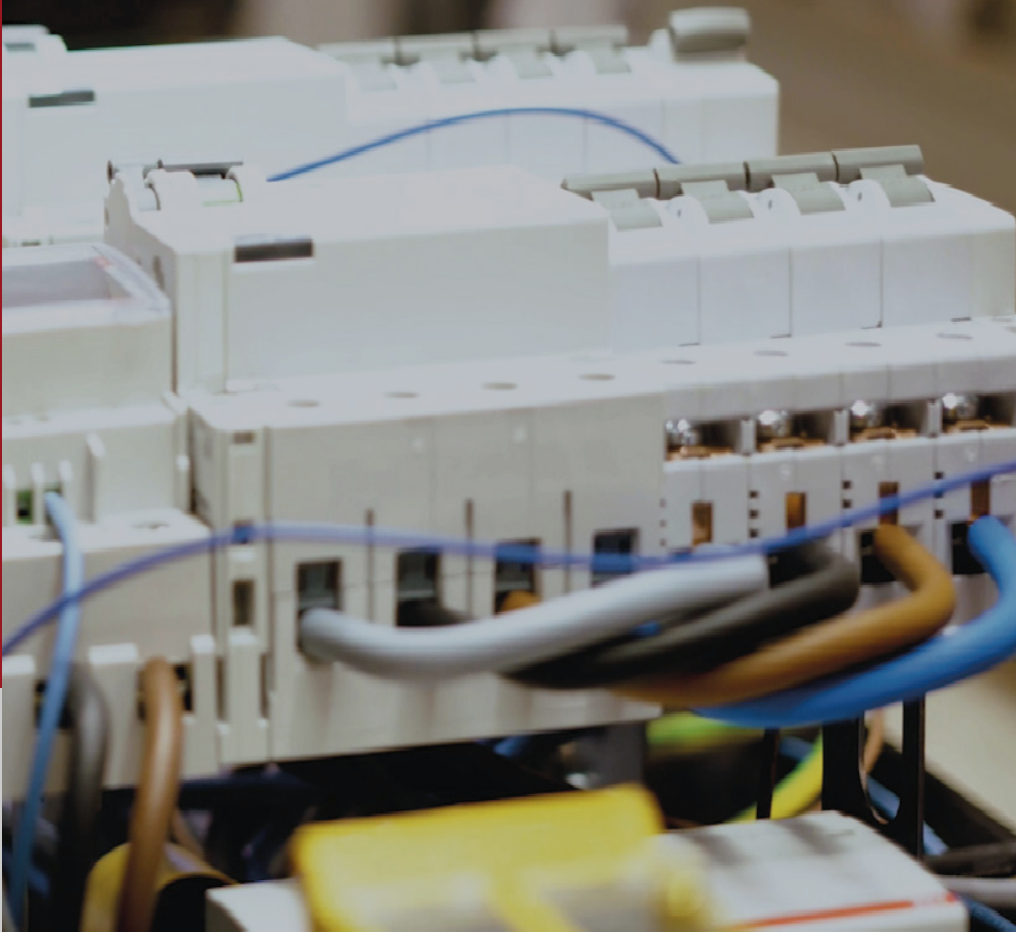
FULLY  
COMPLIANT



ENHANCED  
PROTECTION



**Innovate.  
Design.  
Deliver.**



# **Contents**

<b>CURRENT REGULATIONS</b>	<b>1</b>
<b>CONSUMER UNIT FEATURES &amp; BENEFITS</b>	<b>2</b>
<b>SURGE PROTECTION</b>	<b>3</b>
<b>CONSUMER UNIT BREAKDOWN</b>	<b>4</b>
<b>DISTRIBUTION BOARDS</b>	<b>5</b>
<b>COMPONENT FEATURES &amp; BENEFITS</b>	<b>9</b>
<b>COMPONENTS</b>	<b>10</b>
<b>ACCESSORIES</b>	<b>15</b>



## Brand New Consumer Unit & Component Range



Following extensive research and consultation with contractors and installers, GARO can proudly announce and introduce our new range of consumer units and components. These products are compliant with all the latest regulations and offer numerous features and benefits to enhance convenience, flexibility and safety.

Our extensive range of metal consumer units covers a broad range of installations and is equipped with properties that make it more convenient, flexible and secure.

### Consumer Unit Design & Build

GARO offers a bespoke design and manufacturing service. Contact your sales engineer for more details.

### Current Regulations

The new GARO consumer unit and component range is designed to be compliant with the most recent BS 7671:2018 Requirements. The most important aspect when designing the range was that all products must comply with the latest UK regulations when being installed by installers across the UK. We provide a comprehensive, upgraded solution for every installation.

Our new range consists of distribution boards such as Isolator and Surge Arrestor units, as well as dual RCCB high Integrated consumer units, Garage Units and Empty Distribution boards. We also feature an extensive range of MCB B & C Characteristics, RCCB Type A 30mA, RCBO Type A 30mA B & C Characteristics, AFDD in B & C Characteristics, Surge Arrestor and Isolator DP 100A.

# Key Features & Benefits

## Metal Consumer Units

All GAROs metal consumer units are made using non-combustible and robust metal housing, ensuring compliance with BS 7671, 2015 regulations requiring consumer units in domestic premises to have non-combustible enclosures.

## Mains Switch Tail Clamp

Each unit comes supplied and pre-fitted with a Mains Switch Tail Clamp for added stress relief to ensure the mains tail terminations don't come loose and to help secure the Mains Switch Isolator.



## Integrated SPD

Each consumer unit is supplied with an integrated Surge Protection Device. Overcurrent Protection is provided by the upstream DNO fuse.



## Variable Knockout Sizes

All units come supplied with a range of 40mm, 32mm, 25mm, and 20mm knockouts, making each board universally adaptable for all installations and cable types.





# Surge Protection

## Transient Overvoltage

Most electrical installations across the UK consist of electronic components within them. A Surge Protection device protects these items from overvoltages and surges. Products such as televisions, computers, printers, microwaves, alarms and washing machines are commonplace; as these can all be vulnerable to fluctuations in power supply, which can significantly reduce the equipment's lifespan through degradation and damage.

A surge or transient overvoltage is a short duration increase in voltage measured between two or more conductors. In short, this means anything from microseconds (millionths of a second) to a few milliseconds (thousandths of a second) in duration.

## Regulations

With Regulation 443.4.1, protection against transient overvoltage is required where serious injury to, or loss of, human life may occur, or significant financial or data loss is noted. In all other cases, unless the owner of the installation declares otherwise, a Surge Protection Device should be installed. All GARO consumer units are fitted with Surge Arrestors as standard.



# Consumer Unit Breakdown

## Ultra Compact RCBO

Consisting of MCB's, AFDD's and RCBO's. Designed with ultra compact components, leaving more space for cabling and terminating.

## Earth & Neutral Bar

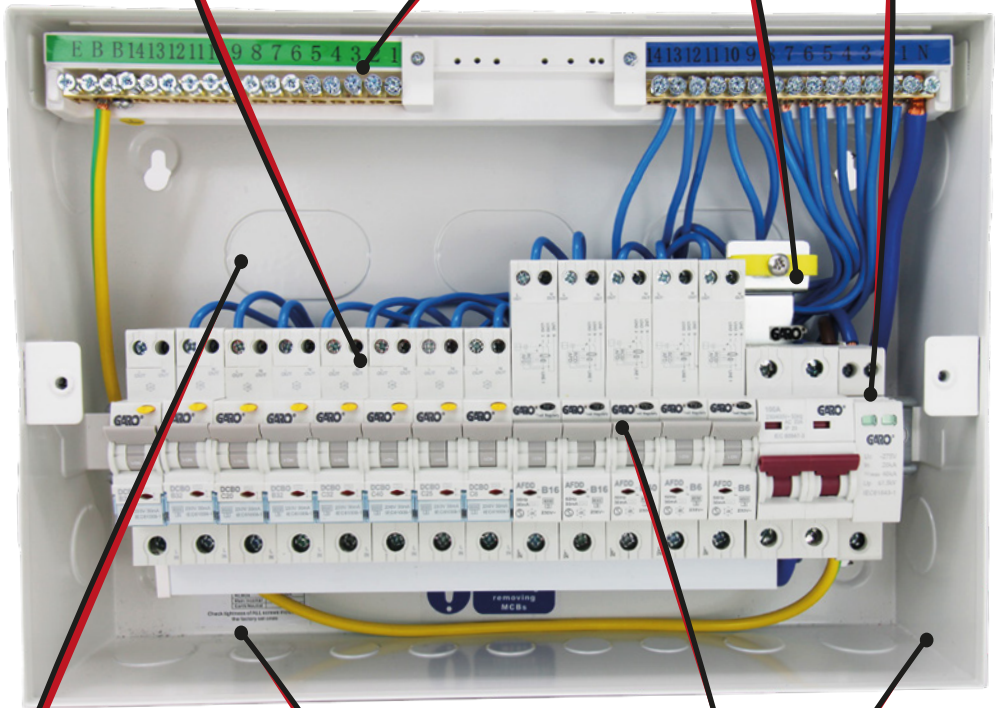
Each unit has its own specifically configured Earth and Neutral Bar to allow for the best practise installation of each board type.

## Main Cable Clamp

To provide additional protection to the main cable.

## Surge Arrestor

Integrated SPD fitted as standard with each consumer unit.



## Large Space for Wiring

All consumer units have a large space for wiring, suitable for the increasing demands and circuit ways in a redundancy.

## Torque Rating Label

A handy Torque rating label is provided in every consumer unit, allowing you to make all terminations with ease.

## Lock Off Capabilities

Lockout devices are available to attach to the moving part of the protective device.

## Non-Combustible Enclosures

Non-combustible and robust metal housings ensure compliance with Regulation 421.1.201.

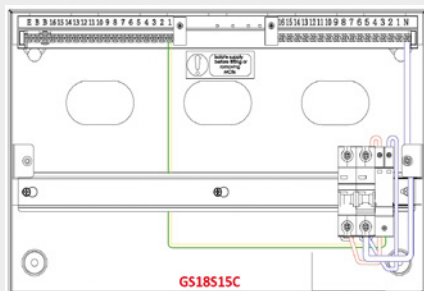
# Consumer Units

## Isolator & Surge Arrestor Consumer Units

Protect your property and keep your electrical systems up-to-date with GARO Metal consumer units, which come with an isolator and surge arrester. Designed with flexibility and safety in mind, and range from 12 - 32 modules wide, making them perfect for any installation.



GS18S15SC



View the range online



### **GS6S3C**

MCU c/w Isolator & Surge 6 mod 3 free

### **GS8S5C**

MCU c/w Isolator & Surge 8 mod 5 free

### **GS10S7C**

MCU c/w Isolator & Surge 10 mod 7 free

### **GS12S9C**

MCU c/w Isolator & Surge 12mod 9 free

### **GS14S11C**

MCU c/w Isolator & Surge 14mod 11 free

### **GS16S13C**

MCU c/w Isolator & Surge 16mod 13 free

### **GS18S15C**

MCU c/w Isolator & Surge 18mod 15 free

### **GS22S19C**

MCU c/w Isolator & Surge 22mod 19 free

### **GS28S25C**

MCU c/w Isolator & Surge 28mod 25 free

### **GS32S29C**

MCU c/w Isolator & Surge 32mod 29 free

186 (W) x 260 (H) x 116 (D)

222 (W) x 260 (H) x 116 (D)

258 (W) x 260 (H) x 116 (D)

294 (W) x 260 (H) x 116 (D)

330 (W) x 260 (H) x 116 (D)

366 (W) x 260 (H) x 116 (D)

402 (W) x 260 (H) x 116 (D)

474 (W) x 260 (H) x 116 (D)

306 (W) x 465 (H) x 110 (D)

342 (W) x 465 (H) x 110 (D)



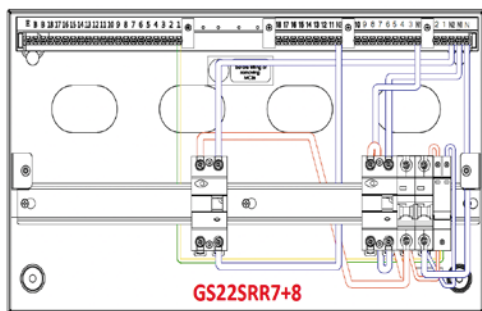
# Consumer Units

## Isolator, Surge and 2 x RCCBs Consumer Units

A reliable, durable, and safe power distribution system for your home. A metal consumer units, designed with a range of 14 to 22 modules wide. Fitted with an isolator, surge arrestor, and two RCCBs, complete with high integrity neutral block. An excellent choice for providing optimal power distribution within your property.



GS22SRR7+8



View the range online

### **GS14SRR3+4**

MCU c/w Isolator, Surge, 2x RCCB 14mod 3+4 free

330 (W) x 260 (H) x 116 (D)

### **GS16SRR4+5**

MCU c/w Isolator, Surge, 2x RCCB 16mod 4+5 free

366(W) x 260 (H) x 116 (D)

### **GS18SRR5+6**

MCU c/w Isolator, Surge, 2x RCCB 18mod 5+6 free

402(W) x 260 (H) x 116 (D)

### **GS22SRR7+8**

MCU c/w Isolator, Surge, 2x RCCB 22mod 7+8 free

474 (W) x 260 (H) x 116 (D)

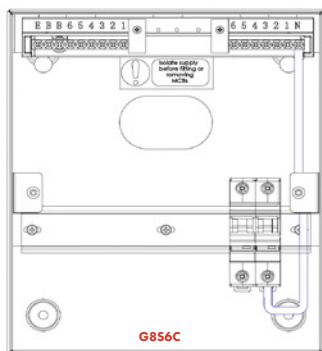
# Distribution Boards

## Isolator Units

A range of metal consumer units furnished with an isolator. An essential component of electrical safety in any home setting. To provide an effective way to isolate power sources, which helps to protect against accidental shock or damage. A range equipped with an isolator, from 8 to 12 modules wide.



G8S6CD



### G8S6CD

MCU c/w Isolator 8mod 6 free

### G10S8CD

MCU c/w Isolator 10mod 8 free

### G12S10CD

MCU c/w Isolator 12mod 10 free



[View the range online](#)

222 (W) x 260 (H) x 116 (D)

258(W) x 260 (H) x 116 (D)

294 (W) x 260 (H) x 116 (D)

# Distribution Boards

## Garage Unit

A Metal consumer unit with an RCCB, 40A, 2 pole and two MCB 16, 32. Designed to be four modules wide and comes with all the features you need to safely power up your home and keep the electricity flowing.



G4R3216

[View the range online](#)



### G4R3216

MCU c/w 80A RCCB 4 mod 32 & 16 MCB

150 (W) x 260 (H) x 116 (D)

## Empty Distribution Boards

A range of empty GARO Metal consumer units. Designed with a range from 4 - 10 Modules.



G4-4

[View the range online](#)



### G4-4D

MCU 4 Mod 4 free

### G6-6D

MCU 6 Mod 6 free

### G8-8D

MCU 8 Mod 8 free

### G10-10D

MCU 10 Mod 10 free

150 (W) x 260 (H) x 116 (D)

186 (W) x 260 (H) x 116 (D)

222 (W) x 260 (H) x 116 (D)

258 (W) x 260 (H) x 116 (D)

## Key Features & Benefits

All GARO components are designed with the installer in mind, meeting all the latest standards. They are easy to install, safe, and suitable for both residential and commercial environments.

### Clip in Modules

All modules are simple to click into place. They can be easily fitted onto the DIN rail and secured by a push up locking mechanism, allowing work to be carried out quickly and efficiently.



### 3 Year Product Warranty

We provide a 3-year warranty on all our components. This provides you with peace of mind, reflecting the confidence we have in our products and the benefit of years of continuous engineering improvement.

### Lock Off Capabilities

Equipped with a switch toggle (rocker switch) designed to attach the moving part of the component, which moves from the 'on' to the 'off' position, ensuring the switch cannot be turned back on while work is being carried out.



### Clear Indication

Each component has a clear and visible trip indication, along with clearly visible product information, no matter if the switch is on or off.



### Neutral Tails (AFDD)

GARO AFDDs provide a 440mm long neutral tail as standard. They are single-width and measure 18mm.



# Components

## Protecting Against Overcurrent and Short Circuits.

This miniature circuit breaker is best fit for residential applications and domestic appliances. Type B MCBs are used for the protection of circuits, such as lighting and distribution circuits.

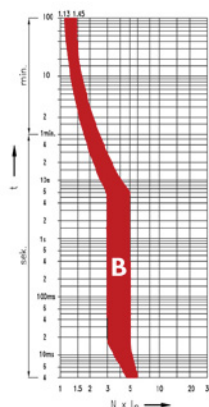


DCBGRB125

## MCB

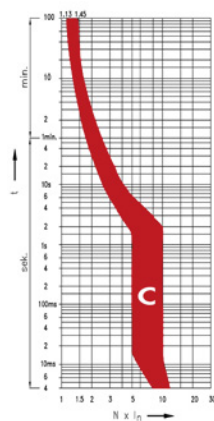
### B Characteristic

DCBGRB106	6A MCB Char B SP 6kA
DCBGRB110	10A MCB Char B SP 6kA
DCBGRB116	16A MCB Char B SP 6kA
DCBGRB120	20A MCB Char B SP 6kA
DCBGRB125	25A MCB Char B SP 6kA
DCBGRB132	32A MCB Char B SP 6kA
DCBGRB140	40A MCB Char B SP 6kA
DCBGRB150	50A MCB Char B SP 6kA
DCBGRB163	63A MCB Char B SP 6kA



### C Characteristic

DCBGRC106	6A MCB Char B SP 6kA
DCBGRC110	10A MCB Char B SP 6kA
DCBGRC116	16A MCB Char B SP 6kA
DCBGRC120	20A MCB Char B SP 6kA
DCBGRC125	25A MCB Char B SP 6kA
DCBGRC132	32A MCB Char B SP 6kA
DCBGRC140	40A MCB Char B SP 6kA
DCBGRC150	50A MCB Char B SP 6kA
DCBGRC163	63A MCB Char B SP 6kA





# Components



DCBOGRC32

## Protecting Against Overcurrent, Short Circuits and Earth Leakage.

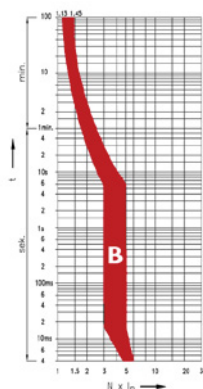
Save space in the unit and provide protection against overloads, short circuits and earth leakage.

This Residual Current Breaker with Overcurrent is a critical safety measure when protecting electrical circuits. A current sensing component that can automatically disconnect whenever a fault happens or the current exceeds the rated sensitivity.

## RCBO Type A

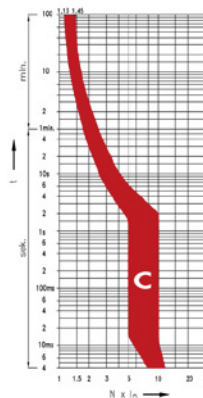
### B Characteristic

DCBOGRB06	6A RCBO Char B 30mA 2P 1 Module
DCBOGRB10	10A RCBO Char B 30mA 2P 1 Module
DCBOGRB16	16A RCBO Char B 30mA 2P 1 Module
DCBOGRB20	20A RCBO Char B 30mA 2P 1 Module
DCBOGRB25	25A RCBO Char B 30mA 2P 1 Module
DCBOGRB32	32A RCBO Char B 30mA 2P 1 Module
DCBOGRB40	40A RCBO Char B 30mA 2P 1 Module



### C Characteristic

DCBOGRC06	6A RCBO Char C 30mA 2P 1 Module
DCBOGRC10	10A RCBO Char C 30mA 2P 1 Module
DCBOGRC16	16A RCBO Char C 30mA 2P 1 Module
DCBOGRC20	20A RCBO Char C 30mA 2P 1 Module
DCBOGRC25	25A RCBO Char C 30mA 2P 1 Module
DCBOGRC32	32A RCBO Char C 30mA 2P 1 Module
DCBOGRC40	40A RCBO Char C 30mA 2P 1 Module



# Components

## Protecting Against Overcurrent, Short Circuits, Earth Leakage and Arc Faults.

Arc Fault Detection Devices are installed in the consumer unit to provide protection from arc faults.

Using a microprocessor technology to analyse the waveform of the the electricity being used; Detecting any unusual signatures that signify an arc on the circuit. Designed with a self test feature.

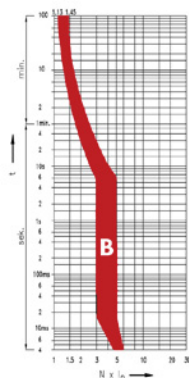


DAFGRB40

## AFDD Type A

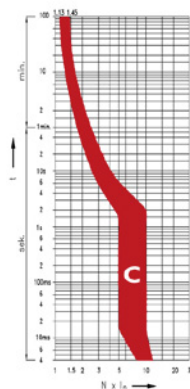
### B Characteristic

DAFGRB06	6A AFDD Single pole B curve 2 P 1 Module
DAFGRB10	10A AFDD Single pole B curve 2 P 1 Module
DAFGRB16	16A AFDD Single pole B curve 2 P 1 Module
DAFGRB20	20A AFDD Single pole B curve 2 P 1 Module
DAFGRB25	25A AFDD Single pole B curve 2 P 1 Module
DAFGRB32	32A AFDD Single pole B curve 2 P 1 Module
DAFGRB40	40A AFDD Single pole B curve 2 P 1 Module



### C Characteristic

DAFGRC06	6A AFDD Single pole C curve 2 P 1 Module
DAFGRC10	10A AFDD Single pole C curve 2 P 1 Module
DAFGRC16	16A AFDD Single pole C curve 2 P 1 Module
DAFGRC20	20A AFDD Single pole C curve 2 P 1 Module
DAFGRC25	25A AFDD Single pole C curve 2 P 1 Module
DAFGRC32	32A AFDD Single pole C curve 2 P 1 Module
DAFGRC40	40A AFDD Single pole C curve 2 P 1 Module



# Components

Enhance safety by detecting ground faults and preventing electrical hazards.

A bi-directional RCCB is essential in electrical systems, detecting ground faults and preventing hazards by identifying imbalances in both directions.

This bi-directional capability is particularly useful in scenarios where the current flow might reverse, such as in systems with renewable energy sources like solar panels or wind turbines. It is also particularly valuable in electric vehicle applications, managing bi-directional electricity flow for added safety during charging.

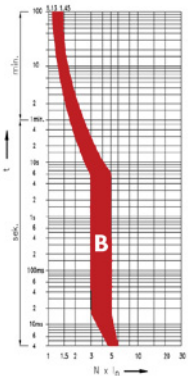


DCBO1MB20

## RCCB Bi-Directional

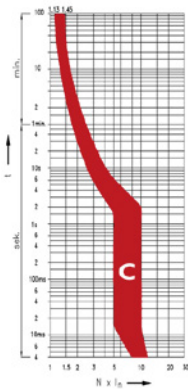
### B Characteristic

DCBO1MB06	6A RCBO 2 Pole 1 Module 30mA B Curve
DCBO1MB10	10A RCBO 2 Pole 1 Module 30mA B Curve
DCBO1MB16	16A RCBO 2 Pole 1 Module 30mA B Curve
DCBO1MB20	20A RCBO 2 Pole 1 Module 30mA B Curve
DCBO1MB25	25A RCBO 2 Pole 1 Module 30mA B Curve
DCBO1MB32	32A RCBO 2 Pole 1 Module 30mA B Curve



### C Characteristic

DCBO1MC06	6A RCBO 2 Pole 1 Module 30mA C Curve
DCBO1MC10	10A RCBO 2 Pole 1 Module 30mA C Curve
DCBO1MC16	16A RCBO 2 Pole 1 Module 30mA C Curve
DCBO1MC20	20A RCBO 2 Pole 1 Module 30mA C Curve
DCBO1MC25	25A RCBO 2 Pole 1 Module 30mA C Curve
DCBO1MC32	32A RCBO 2 Pole 1 Module 30mA C Curve



# Components

**Ensures protection against faults regardless of the current direction.**

Advanced safety device that enhances the flexibility and reliability of electrical protection systems.

Its ability to function correctly with bidirectional current flow makes it ideal for modern electrical installations, particularly those incorporating renewable energy sources. Reducing the need to ensure correct orientation during installation, minimising errors and saving time.

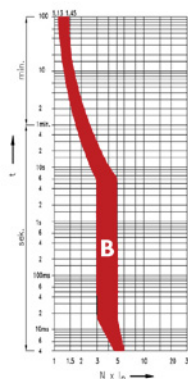


DCBO2MB40

## RCBO Bi-Directional

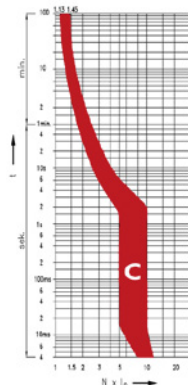
### B Characteristic

DCBO2MB06	6A RCBO 2 Pole 2 Module 30mA B Curve
DCBO2MB10	10A RCBO 2 Pole 2 Module 30mA B Curve
DCBO2MB16	16A RCBO 2 Pole 2 Module 30mA B Curve
DCBO2MB20	20A RCBO 2 Pole 2 Module 30mA B Curve
DCBO2MB25	25A RCBO 2 Pole 2 Module 30mA B Curve
DCBO2MB32	32A RCBO 2 Pole 2 Module 30mA B Curve
DCBO2MB40	40A RCBO 2 Pole 2 Module 30mA B Curve
DCBO2MB50	50A RCBO 2 Pole 2 Module 30mA B Curve
DCBO2MB63	63A RCBO 2 Pole 2 Module 30mA B Curve



### C Characteristic

DCBO2MC06	6A RCBO 2 Pole 2 Module 30mA C Curve
DCBO2MC10	10A RCBO 2 Pole 2 Module 30mA C Curve
DCBO2MC16	16A RCBO 2 Pole 2 Module 30mA C Curve
DCBO2MC20	20A RCBO 2 Pole 2 Module 30mA C Curve
DCBO2MC25	25A RCBO 2 Pole 2 Module 30mA C Curve
DCBO2MC32	32A RCBO 2 Pole 2 Module 30mA C Curve
DCBO2MC40	40A RCBO 2 Pole 2 Module 30mA C Curve
DCBO2MC50	50A RCBO 2 Pole 2 Module 30mA C Curve
DCBO2MC63	63A RCBO 2 Pole 2 Module 30mA C Curve



# Accessories



DCB-PB



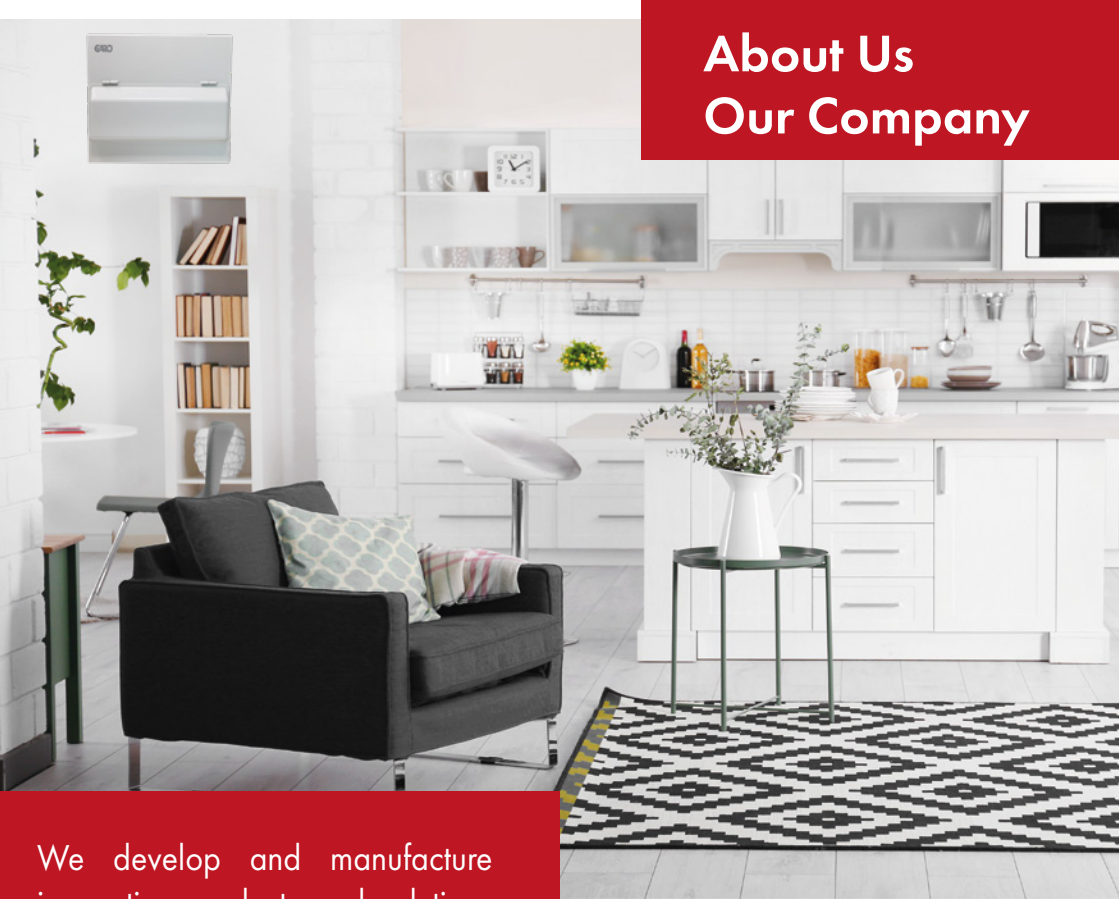
Metal Blank

## Additional Accessories

METALBLANK	1 Mod Metal Blank Consumer Units
DCB-PB	Modular MCB Plastic Blank
MCU-KIT	Consumer Unit Accessories Kit
MB-M-2	100A Busbar Main plus 2 modules
MB-M-3	100A Busbar Main plus 3 modules
MB-M-4	100A Busbar Main plus 4 modules
MB-M-6	100A Busbar Main plus 6 modules
MB-M-8	100A Busbar Main plus 8 modules
MB-M-10	1100A Busbar Main plus 10 modules
SPDCable	SPD Brown & Blue Earth Cable 210mm



# About Us Our Company



We develop and manufacture innovative products and solutions within electricity and e-mobility from our UK and Ireland locations. A select team of qualified technical internal sales personnel support Electrical Wholesalers and the Industrial Division of GARO Electric Ltd, targeting wholesalers, professionals and end-users alike. Our brand is your guarantee of electrical safety, user-friendliness and durability.

We see challenges as new opportunities and are driven by the curiosity to try new things, with a focus on developing products and solutions for a sustainable future. Our history gives us our unique GARO culture, and together with our business concept and vision, it provides us with a clear direction for the future.

# GARO®



Visit the website for  
more information

Garo Electric Ltd  
Unit 16,  
Urban Express Way,  
Aston Hall Road,  
Aston,  
Birmingham  
B6 7FH

Tel: 0121 3899 444  
Sales@garo.co.uk  
[www.garoelectric.com](http://www.garoelectric.com)

