



EXCELLENT CUSTOMER SERVICE



NATIONWIDE SUPPORT



TRUSTED SUPPLIER

2023

DIAMOND DOMESTIC CONSUMER UNITS

Diamond Consumer Units	2
Diamond MCB, RCBO 6kA	3
Diamond AFDD, Isolators, RCCB & SPD	4
EV Distribution Boards	6
Metal TPN Boards	7

COMPONENTS

9

Miniature Circuit Breaker 10kA	10
Residual Current Circuit Breaker (RCCB)	13
RCBO	14
RCBO EV Type B	16
Timers	17
Multifunction Timer	17
Test Relays & Time Lag Switches	17
Kilowatt Hour Meters	18
Modular Contactors	18
Surge Protection Devices	19
Modular Isolator & Changeover Switches	20
Bell Transformer & Chimes	20
Accessories	20
Busbar	21
Terminal Blocks	22
Group Link Boxes	23
Blanking Strip	23
Fuse Disconnectors	23

ENCLOSURES

24

Plastic IP65	25
Distribution Enclosures	26

ENCLOSED SWITCHGEAR

27

Safety Switches AC IP65	28
Solar DC Safety Switches IP65	28
Isolator Switches Enclosed IP53 IP55 IP65	28
Fuse Switches Enclosed IP55 BS Type	29
Changeover Switches IP53 IP55 IP65	29

ELECTRIC VEHICLE CHARGING

30

New! Entity Chargers	31
Entity Pro Chargers	32
Entity Accessories	33
Dual Outlet GTB Wall Chargers	35
Street Charging	36
DC Chargers - 24kW & 50kW	37
DC 120 Kw & 180kw Chargers	38

INDUSTRIAL PLUGS & SOCKETS

39

Fast Finder	40
Plugs	41
Sockets	43
Sockets & Inlets - Wall Mounting	46
3 Way - Connection Outlets	50
Panel Mounting Outlets & Inlet	51
Combination Units	55
Interlocked Socket Outlets	56
Interlocked Combination Units	57
Pro Scene Black Plugs & Sockets	59

Innovate. Design. Deliver.

NEW!
The Diamond Range



- MCB, RCBO, & AFDD
- Quality Production
- Competitively Priced
- Comprehensive Component Range
- Easy to Install
- Free Nationwide Delivery



EXCEPTIONAL
VALUE



FULL RANGE
OF SIZES



COMPREHENSIVE
WARRANTIES



STRONG &
DURABLE

DIAMOND CONSUMER UNITS - Surface Metal IP41 BS EN60439-3

Exclusive design for surface mounting. The housing is manufactured in metal and is also fitted with a door. Each unit is supplied with earth and neutral blocks, additional blocks can be fitted on request.

The enclosures are manufactured from steel. Applicable standard is EN61439-3 for a rated current of 100A at 230Volts. All GARO consumer units are assembled in our manufacturing facility specialising in quick turnaround on bespoke orders.

Amendment 3 compliant

Full CAD design service available.

DIAMOND CONSUMER UNITS IP41 WITH ISOLATOR & SURGE PROTECTION

Item	Incoming	Ways Free	Surge Protection	Trade Price
GS12S9C	100A	9	Yes	111.44
GS14S11C	100A	11	Yes	116.04
GS16S13C	100A	13	Yes	120.27
GS18S15C	100A	15	Yes	124.45
GS22S19C	100A	19	Yes	134.45
GS28S25C	100A	25	Yes	197.46
GS32S29C	100A	29	Yes	205.00



DIAMOND CONSUMER UNITS IP41 WITH ISOLATOR, 2 X RCCB & SURGE PROTECTION

Item	Incoming	Ways Free	Surge Protection	RCCB Type A	High Integrity	Trade Price
GS14SRR3-4	100A	3+4	Yes	2 x 80	Yes	181.54
GS16SRR4-5	100 A	4+5	Yes	2 x 80	Yes	187.60
GS18SRR5-6	100 A	5+6	Yes	2 x 80	Yes	191.50
GS22SRR7-8	100A	7+8	Yes	2 x 80	Yes	198.92



DIAMOND CONSUMER UNITS IP41 WITH ISOLATOR

Item	Incoming	Ways Free	Trade Price
G8S6CD	100A	6	58.88
G10S8CD	100 A	8	62.33
G12S10CD	100 A	10	66.65



DIAMOND CONSUMER UNITS IP41

Item	Incoming	Ways Free	Trade Price
G4-4D	Optional	4	40.21
G6-6D	Optional	6	44.46
G8-8D	Optional	8	47.15
G10-10D	Optional	10	54.30



DIAMOND CONSUMER UNITS FOR GARAGE

Item	Incoming	Ways Free	MCB	Trade Price
G4R3216	RCCB 40A	0	32 & 16	73.85



DIAMOND ACCESSORIES MCB

Miniature Circuit Breakers Pole 6kA Curve - B

Item	Rated (A)	Packing Units	Trade Price
DCBGRB106	6	12	2.87
DCBGRB110	10	12	2.87
DCBGRB116	16	12	2.87
DCBGRB120	20	12	2.87
DCBGRB125	25	12	2.87
DCBGRB132	32	12	2.87
DCBGRB140	40	12	3.16
DCBGRB150	50	12	3.16
DCBGRB163	63	12	3.16



DIAMOND ACCESSORIES - RCBO

RCBO Single Pole 6kA Curve - B

Item	Rated (A)	Packing Units	Trade Price
DCBOGRB06	6	12	25.24
DCBOGRB10	10	12	25.24
DCBOGRB16	16	12	25.24
DCBOGRB20	20	12	25.24
DCBOGRB25	25	12	25.24
DCBOGRB32	32	12	25.24
DCBOGRB40	40	12	25.24



DIAMOND ACCESSORIES - MCB

Miniature Circuit Breakers Pole 6kA Curve - C

Item	Rated (A)	Packing Units	Trade Price
DCBGRC106	6	12	2.87
DCBGRC110	10	12	2.87
DCBGRC116	16	12	2.87
DCBGRC120	20	12	2.87
DCBGRC125	25	12	2.87
DCBGRC132	32	12	2.87
DCBGRC140	40	12	3.16
DCBGRC150	50	12	3.16
DCBGRC163	63	12	3.16



DIAMOND ACCESSORIES - RCBO

RCBO Single Pole 6kA Curve - C

Item	Rated (A)	Packing Units	Trade Price
DCBOGRC06	6	12	25.24
DCBOGRC10	10	12	25.24
DCBOGRC16	16	12	25.24
DCBOGRC20	20	12	25.24
DCBOGRC25	25	12	25.24
DCBOGRC32	32	12	25.24
DCBOGRC40	40	12	25.24



DIAMOND ACCESSORIES - AFDD

ARC FAULT DETECTION SINGLE POLE 6KA CURVE B

Item	Rated (A)	Packing Units	Trade Price
DAFGRB06	6	12	195.00
DAFGRB10	10	12	195.00
DAFGRB16	16	12	195.00
DAFGRB20	20	12	195.00
DAFGRB25	25	12	195.00
DAFGRB32	32	12	195.00
DAFGRB40	40	12	195.00



DIAMOND ACCESSORIES - ISOLATOR, RCCB, SPD & BLANKS

Item	Description	Rated (A)	Packing Units	Trade Price
DSV2100	Double Pole Isolator	100	12	8.20



Item	Description	Rated (A)	Packing Units	Trade Price
DCCB80-2-03	Double Pole RCCB	80	6	38.80
DCCB40-2-03	Double Pole RCCB	40	6	34.98



Item	Description	Rated (A)	Packing Units	Trade Price
DST2-275-2	Surge Protection Type 2 TNC	100	12	29.72



Item	Description	Rated (A)	Packing Units	Trade Price
METALBLANK	Metal Blank	1 Mod	10	0.80



DISTRIBUTION BOARDS

FOR DOMESTIC & EV CHARGING



EXCEPTIONAL
VALUE



CE CERTIFIED



WEATHER
PROOF



STRONG &
DURABLE

PRIORITY AND NON PRIORITY SHOWER BOARDS

Item	Enclosure	Incoming	Description	No. of Showers	Relays	Trade Price
GM6-PS	G6S4	40A RCBO	PRIORITY / EV	2	1	156.66
GM10-PS63	G10S8	63A RCCB	PRIORITY	2	1	253.65
GM8-NPS	G8S6	40A RCBO	NON PRIORITY	2	2	232.91
GM14-3NPS	G12S10	40A RCBO	NON PRIORITY	3	3	459.49



ELECTRIC VEHICLE DISTRIBUTION BOARDS METAL IP41

Item	Enclosure	Total Modules	IP Rating	Incoming	PEN Fault Detection	Load Management	Trade Price
G2EV40	G2-2	2	41	RCBO A	No	No	68.05
G4EV40	G4-4	4	41	RCBO A	No	No	68.05
G6EV40PME	G6-6	6	41	RCBO A	Yes	No	259.15
G6EVPME	G6-6	6	41	Terminals	Yes	No	240.32
G6EVPME132	G6-6	6	41	MCB	Yes	No	241.52
G10EV40PMEDLM60	G10-10	10	41	RCBO A	Yes	Yes 60A	620.42
G10EV40PMEDLM80	G10-10	10	41	RCBO B	Yes	Yes 80A	620.42



G8EV40PMEB

ELECTRIC VEHICLE DISTRIBUTION BOARDS METAL IP41 & SURGE PROTECTION

Item	Enclosure	Total Modules	IP Rating	Incoming	PEN Fault Detection	Load Management	Trade Price
GS4EV40	G4-4	4	41	RCBO A	No	No	141.14
GS8EV40PME	G8-8	8	41	RCBO A	Yes	No	318.00
GS12EV40PMEDLM60	G12-12	12	41	RCBO A	Yes	Yes 60A	700.00
GS12EV40PMEDLM80	G12-12	12	41	RCBO A	Yes	Yes 80A	700.00



ELECTRIC VEHICLE DISTRIBUTION BOARDS PLASTIC IP65

Item	Enclosure	Total Modules	IP Rating	Incoming	PEN Fault Detection	Load Management	Trade Price
GC4EV40	GCUT4	4	65	RCBO A	No	No	70.57
GC6EV40PME	GCUT6	6	65	RCBO A	Yes	No	283.34
GC12EV40PMEDLM60	GCUT12	12	65	RCBO A	Yes	Yes 60A	631.76
GC12EV40PMEDLM80	GCUT12	12	65	RCBO A	Yes	Yes 80A	631.76



ELECTRICAL VEHICLE DISTRIBUTION BOARDS PLASTIC IP65 & SURGE PROTECTION

Item	Enclosure	Total Modules	IP Rating	Incoming	PEN Fault Detection	Load Management	Trade Price
GCS4EV40	GCUT6	4	65	RCBO A	No	No	146.28
GCS8EV40PME	GCUT8	8	65	RCBO A	Yes	No	323.60
GCS12EV40PMEDLM60	GCUT12	12	65	RCBO A	Yes	Yes 60A	705.00
GCS12EV40PMEDLM80	GCUT12	12	65	RCBO A	Yes	Yes 80A	705.00



TPN - Surface Metal IP41

Exclusive design for surface mounting. The housing is manufactured in metal and is also fitted with a door. Each unit is supplied with earth and neutral blocks. This product is supplied without the main incoming device.

Metal TPN Boards 125A

Item	Ways Single Pole	Rating (A)	Width mm	Height mm	Depth mm	Trade Price
GTPN12	12	125	465	506	105	142.84
GTPN18	18	125	465	560	105	163.24
GTPN24	24	125	465	614	105	172.33
GTPN30	30	125	465	668	105	201.25
GTPN36	36	125	465	722	105	231.44
GTPN42	42	125	465	777	105	267.57
GTPN48	48	125	465	830	105	302.03
GTPN54	54	125	465	884	105	354.55
GTPN72	72	125	465	1,046	105	443.18



Metal TPN Boards 125A Accessories

Item	Description	Width mm	Height mm	Depth mm	Trade Price
GTPNH1	TPN header box 16 module	465	266	105	45.57
GTPNH2	Cable entry spreader box	465	206	105	29.84
GTPNH3	Cable entry meter box	465	206	105	29.84
GTPN-ADAPTOR	Adaptor TPN to S Phase				7.09
METAL BLANK	1 Mod Metal Blank				4.28
GCD100-4-03	4Pole 100A 30mA RCCB				243.37
GSV4125	4Pole 125A Isolator				47.34
GNM3TD-CT160	Multi function meter c/w 160CT (GNT160)				386.23

RESIDUAL CURRENT BREAKER With Overcurrent Protection (RCBO) 10kA Long

An RCBO is a combination of an RCCB and MCB. The 10kA Long Range is Type A and is 1P+N. The products are approved and certified according to EN 61009

2 Pole 10kA Curve - B

Item	Rated (A)	Modules	Poles	mA	For cable size mm ²	Trade Price
RCBOLIB06A	6	1	2	30	1-6	44.40
RCBOLIB10A	10	1	2	30	1-6	44.40
RCBOLIB16A	16	1	2	30	1-6	44.40
RCBOLIB20A	20	1	2	30	1-6	44.40
RCBOLIB25A	25	1	2	30	1-6	44.40
RCBOLIB32A	32	1	2	30	1-6	44.40
RCBOLIB40A	40	1	2	30	1-6	46.05
RCBOLIB45A	45	1	2	30	1-6	46.05



2 Pole 10kA Curve - C

Item	Rated (A)	Modules	Poles	mA	For cable size mm ²	Trade Price
RCBOLIC06A	6	1	2	30	1-6	44.40
RCBOLIC10A	10	1	2	30	1-6	44.40
RCBOLIC16A	16	1	2	30	1-6	44.40
RCBOLIC20A	20	1	2	30	1-6	44.40
RCBOLIC25A	25	1	2	30	1-6	44.40
RCBOLIC32A	32	1	2	30	1-6	44.40
RCBOLIC40A	40	1	2	30	1-6	46.05
RCBOLIC45A	45	1	2	30	1-6	46.05

MINIATURE CIRCUIT BREAKER 10kA

1 Pole 10kA Curve - C

£

Item	Rated (A)	Packing Units	Trade Price
MCB GSC 101	1	12	10.71
MCB GSC 102	2	12	10.71
MCB GSC 104	4	12	10.71
MCB GSC 106	6	12	8.27
MCB GSC 110	10	12	8.27
MCB GSC 116	16	12	8.27
MCB GSC 120	20	12	8.27
MCB GSC 125	25	12	8.27
MCB GSC 132	32	12	8.27
MCB GSC 140	40	12	10.26
MCB GSC 150	50	12	20.54
MCB GSC 163	63	12	24.57



1-Pole MCB 10kA

1 Pole 10kA Curve - D

£

Item	Rated (A)	Packing Units	Trade Price
MCB GSD 106	6	12	8.27
MCB GSD 110	10	12	8.27
MCB GSD 116	16	12	8.27
MCB GSD 120	20	12	8.27
MCB GSD 125	25	12	8.27
MCB GSD 132	32	12	8.27



1-Pole MCB 10kA

3 Pole 10kA Curve - C

£

Item	Rated (A)	Packing Units	Trade Price
MCB GSC 301	1	4	50.96
MCB GSC 302	2	4	50.96
MCB GSC 304	4	4	50.96
MCB GSC 306	6	4	40.73
MCB GSC 310	10	4	40.73
MCB GSC 316	16	4	40.73
MCB GSC 320	20	4	40.73
MCB GSC 325	25	4	40.73
MCB GSC 332	32	4	40.73
MCB GSC 340	40	4	57.95
MCB GSC 350	50	4	71.88
MCB GSC 363	63	4	86.78



3-Pole MCB 10kA

3 Pole 10kA Curve - D

£

Item	Rated (A)	Packing Units	Trade Price
MCB GSD 306	6	4	58.00
MCB GSD 310	10	4	58.00
MCB GSD 316	16	4	58.00
MCB GSD 320	20	4	58.00
MCB GSD 325	25	4	58.00
MCB GSD 332	32	4	58.00



3-Pole MCB 10kA



COMPONENTS



IS 10101:2020
COMPLIANT



CE CERTIFIED



ENHANCED
PROTECTION



COMPREHENSIVE
WARRANTIES

MINIATURE CIRCUIT BREAKER 10kA CURVE B

1-Pole 10kA Curve - B

Item	Rated (A)	Packing Units	Trade Price
MCB GSB 106	6	12	8.27
MCB GSB 110	10	12	8.27
MCB GSB 116	16	12	8.27
MCB GSB 120	20	12	8.27
MCB GSB 125	25	12	8.27
MCB GSB 132	32	12	8.27
MCB GSB 140	40	12	10.26
MCB GSB 150	50	12	20.54
MCB GSB 163	63	12	24.57



1-Pole MCB 10kA

2-Pole 10kA Curve - B

Item	Rated (A)	Packing Units	Trade Price
MCB GSB 206	6	6	19.89
MCB GSB 210	10	6	19.89
MCB GSB 213	13	6	19.89
MCB GSB 216	16	6	19.89
MCB GSB 220	20	6	19.89
MCB GSB 225	25	6	19.89
MCB GSB 232	32	6	19.89
MCB GSB 240	40	6	30.38
MCB GSB 250	50	6	42.67
MCB GSB 263	63	6	52.88



2-Pole MCB 10kA

3-Pole 10kA Curve - B

Item	Rated (A)	Packing Units	Trade Price
MCB GSB 306	6	4	40.73
MCB GSB 310	10	4	40.73
MCB GSB 316	16	4	40.73
MCB GSB 320	20	4	40.73
MCB GSB 325	25	4	40.73
MCB GSB 332	32	4	40.73
MCB GSB 340	40	4	57.95
MCB GSB 350	50	4	71.88
MCB GSB 363	63	4	86.78



3-Pole MCB 10kA

4-Pole 10kA Curve - B

Item	Rated (A)	Packing Units	Trade Price
MCB GSB 406	6	4	53.25
MCB GSB 410	10	4	53.25
MCB GSB 413	13	4	53.25
MCB GSB 416	16	4	53.25
MCB GSB 420	20	4	53.25
MCB GSB 425	25	4	53.25
MCB GSB 432	32	4	53.25
MCB GSB 440	40	4	84.75
MCB GSB 450	50	4	95.21
MCB GSB 463	63	4	118.19



4-Pole MCB 10kA

COMPONENTS

MINIATURE CIRCUIT BREAKER 10kA CURVE C

1-Pole 10kA Curve - C

Item	Rated (A)	Packing Units	Trade Price
MCB GSC 101	1	12	10.71
MCB GSC 102	2	12	10.71
MCB GSC 104	4	12	10.71
MCB GSC 106	6	12	8.27
MCB GSC 110	10	12	8.27
MCB GSC 116	16	12	8.27
MCB GSC 120	20	12	8.27
MCB GSC 125	25	12	8.27
MCB GSC 132	32	12	8.27
MCB GSC 140	40	12	10.26
MCB GSC 150	50	12	20.54
MCB GSC 163	63	12	24.57



1-Pole MCB 10kA

2-Pole 10kA Curve - C

Item	Rated (A)	Packing Units	Trade Price
MCB GSC 206	6	6	19.89
MCB GSC 210	10	6	19.89
MCB GSC 216	16	6	19.89
MCB GSC 220	20	6	19.89
MCB GSC 225	25	6	19.89
MCB GSC 232	32	6	19.89
MCB GSC 240	40	6	22.99
MCB GSC 250	50	6	42.67
MCB GSC 263	63	6	52.88



2-Pole MCB 10kA

3-Pole 10kA Curve - C

Item	Rated (A)	Packing Units	Trade Price
MCB GSC 301	1	4	50.96
MCB GSC 302	2	4	50.96
MCB GSC 304	4	4	50.96
MCB GSC 306	6	4	40.73
MCB GSC 310	10	4	40.73
MCB GSC 316	16	4	40.73
MCB GSC 320	20	4	40.73
MCB GSC 325	25	4	40.73
MCB GSC 332	32	4	40.73
MCB GSC 340	40	4	57.95
MCB GSC 350	50	4	71.88
MCB GSC 363	63	4	86.78



3-Pole MCB 10kA

4-Pole 10kA Curve - C

Item	Rated (A)	Packing Units	Trade Price
MCB GSC 406	6	4	58.05
MCB GSC 410	10	4	58.05
MCB GSC 416	16	4	58.05
MCB GSC 420	20	4	58.05
MCB GSC 425	25	4	58.05
MCB GSC 432	32	4	58.05
MCB GSC 440	40	4	84.75
MCB GSC 450	50	4	95.21
MCB GSC 463	63	4	118.19



4-Pole MCB 10kA

MINIATURE CIRCUIT BREAKER 10kA CURVE D

1-Pole 10kA Curve - D

Item	Rated (A)	Packing Units	Trade Price
MCB GSD 106	6	12	8.27
MCB GSD 110	10	12	8.27
MCB GSD 116	16	12	8.27
MCB GSD 120	20	12	8.27
MCB GSD 125	25	12	8.27
MCB GSD 132	32	12	8.27



1-Pole MCB 10kA

2-Pole 10kA Curve - D

Item	Rated (A)	Packing Units	Trade Price
MCB GSD 206	6	6	19.89
MCB GSD 210	10	6	19.89
MCB GSD 216	16	6	19.89
MCB GSD 220	20	6	19.89
MCB GSD 225	25	6	19.89
MCB GSD 232	32	6	19.89



2-Pole MCB 10kA

3-Pole 10kA Curve - D

Item	Rated (A)	Packing Units	Trade Price
MCB GSD 306	6	4	40.73
MCB GSD 310	10	4	40.73
MCB GSD 316	16	4	40.73
MCB GSD 320	20	4	40.73
MCB GSD 325	25	4	40.73
MCB GSD 332	32	4	40.73



3-Pole MCB 10kA

4 Pole 10kA Curve - D

Item	Rated (A)	Packing Units	Trade Price
MCB GSD 406	6	4	58.00
MCB GSD 410	10	4	58.00
MCB GSD 416	16	4	58.00
MCB GSD 420	20	4	58.00
MCB GSD 425	25	4	58.00
MCB GSD 432	32	4	58.00

£



4-Pole MCB 10kA

RESIDUAL CURRENT CIRCUIT BREAKERS

GARO's range of RCCBs are **10kA, Type A or Type B** and are tested and certified to standard EN 61008. The range can be fed from the TOP or BOTTOM. On each 2-Pole 10kA device it is possible to connect the neutral conductor on the right or left side. Protection to IP20. Auxiliary Contact see previous page.

GARO RCCB Type A & B Rated Voltage 200-415V AC Max Torque 3 Nm Protection Class IP20

10kA TYPE A

2 Pole

Item	Rated (A)	Modules	Poles	mA	Max cable size mm ²	Trade Price
GCD 25-2-03	25	2	2	30	25	37.65
GCD 40-2-03	40	2	2	30	25	34.07
GCD 63-2-03	63	2	2	30	25	36.55
GCD 63-2-1	63	2	2	100	25	68.58
GCD 63-2-3	63	2	2	300	25	68.58
GCD 80-2-03	80	2	2	30	25	74.69
GCD 100-2-1	100	2	2	100	25	198.01
GCD 100-2-3	100	2	2	300	25	198.01



GCD 25-2-03

4 Pole

Item	Rated (A)	Modules	Poles	mA	Max cable size mm ²	Trade Price
GCD 25-4-03	25	4	4	30	25	60.88
GCD 40-4-03	40	4	4	30	25	55.62
GCD 63-4-03	63	4	4	30	25	74.30
GCD 80-4-03	80	4	4	30	25	97.92
GCD 100-4-03	100	4	4	30	25	243.37
GCD 40-4-3	40	4	4	300	25	61.88
GCD 63-4-3	63	4	4	300	25	84.24
GCD 63-4-5	63	4	4	500	25	84.24
GCD 80-4-3	80	4	4	300	25	111.60
GCD 100-4-1	100	4	4	100	25	211.75
GCD 100-4-3	100	4	4	300	25	198.01



GCD 63-4-5

10kA TYPE B

GCD63-4-03B	63A	4	4	30	25	452.65
-------------	-----	---	---	----	----	--------

S TYPE 10kA TYPE A RCCB

Selective - minimum time delay 40ms.

2 Pole

Item	Rated (A)	Modules	Poles	mA	Max cable size mm ²	Trade Price
GCD 63-2-1S	63	2	2	100	25	98.76
GCD 63-2-3S	63	2	2	300	25	108.08



GCD 63-2-1S

4 Pole

GCD 63-4-1S	63	4	4	100	25	141.89
GCD 63-4-3S	63	4	4	300	25	141.89

AUXILIARY CONTACTS

Item	Description	Trade Price
HLPKD	Aux for RCCB (2 Pole + 4 Pole Suitable for GCD 25, 40, 63, 80 only)	15.04

RESIDUAL CURRENT CIRCUIT BREAKER with Overcurrent Protection (RCBO) 6kA

An RCBO is a combination of an RCCB and MCB. The 6kA range is **Type A** and can be supplied from the top or bottom. The products are approved and certified according to EN 61009.

GARO RCBO 6kA Type A Rated Voltage 200-415V AC Max Torque 3 Nm Protection Class IP20

6kA TYPE A

2 Pole 6kA Curve - B

£

Item	Rated (A)	Modules	Poles	mA	For cable size mm ²	Trade Price
RCBO GRB06	6	2	2	30	1-25	38.16
RCBO GRB10	10	2	2	30	1-25	38.16
RCBO GRB16	16	2	2	30	1-25	38.16
RCBO GRB20	20	2	2	30	1-25	38.16
RCBO GRB25	25	2	2	30	1-25	38.16
RCBO GRB32	32	2	2	30	1-25	38.16
RCBO GRB40EVS	40	2	2	30	1-25	40.30



2 Pole RCBO 6kA

4 Pole 6kA Curve - B

£

Item	Rated (A)	Modules	Poles	mA	For cable size mm ²	Trade Price
RCBO GSB06	6	4	3P+N	30	1-25	129.03
RCBO GSB10	10	4	3P+N	30	1-25	129.03
RCBO GSB16	16	4	3P+N	30	1-25	129.03
RCBO GSB20	20	4	3P+N	30	1-25	129.03
RCBO GSB25	25	4	3P+N	30	1-25	129.03
RCBO GSB32	32	4	3P+N	30	1-25	129.03

2 Pole 6kA Curve - C

£

Item	Rated (A)	Modules	Poles	mA	For cable size mm ²	Trade Price
RCBO GRC06	6	2	2	30	1-25	38.16
RCBO GRC10	10	2	2	30	1-25	38.16
RCBO GRC16	16	2	2	30	1-25	38.16
RCBO GRC20	20	2	2	30	1-25	38.16
RCBO GRC25	25	2	2	30	1-25	38.16
RCBO GRC32	32	2	2	30	1-25	38.16
RCBO GRC40EVS	40	2	2	30	1-25	40.30

4 Pole 6kA Curve - C

£

Item	Rated (A)	Modules	Poles	mA	For cable size mm ²	Trade Price
RCBO GSC06	6	4	3P+N	30	1-25	129.03
RCBO GSC10	10	4	3P+N	30	1-25	129.03
RCBO GSC16	16	4	3P+N	30	1-25	129.03
RCBO GSC20	20	4	3P+N	30	1-25	129.03
RCBO GSC25	25	4	3P+N	30	1-25	129.03
RCBO GSC32	32	4	3P+N	30	1-25	129.03



4 Pole RCBO 6kA

LOCKING DEVICE + RCBO AUXILIARY

Item	Description	Trade Price
LB2	Locking mechanism for RCBO & RCCB	6.77
HLPKO	Aux for RCBO 2 Pole + 4 Pole	18.51



RESIDUAL CURRENT BREAKER with Overcurrent Protection (RCBO) 10kA

An RCBO is a combination of an RCCB and MCB. The 10kA range is **Type A** and can be supplied from the top or bottom. The products are approved and certified according to EN 61009.

GARO RCBO 10kA Type A Rated Voltage 200-415V AC Max Torque 3 Nm Protection Class IP20

2 Pole 10kA Curve - B

Item	Rated (A)	Modules	Poles	mA	For cable size mm ²	Trade Price
RCBO GS B06A2P	6	2	2	30	1-25	49.44
RCBO GS B10A2P	10	2	2	30	1-25	49.44
RCBO GS B16A2P	16	2	2	30	1-25	49.44
RCBO GS B20A2P	20	2	2	30	1-25	49.44
RCBO GS B25A2P	25	2	2	30	1-25	49.44
RCBO GS B32A2P	32	2	2	30	1-25	49.44
RCBO GS B40A2P	40	2	2	30	1-25	49.44

2 Pole 10kA Curve - C

Item	Rated (A)	Modules	Poles	mA	For cable size mm ²	Trade Price
RCBO GS C06A2P	6	2	2	30	1-25	49.44
RCBO GS C10A2P	10	2	2	30	1-25	49.44
RCBO GS C16A2P	16	2	2	30	1-25	49.44
RCBO GS C20A2P	20	2	2	30	1-25	49.44
RCBO GS C25A2P	25	2	2	30	1-25	49.44
RCBO GS C32A2P	32	2	2	30	1-25	49.44
RCBO GS C40A2P	40	2	2	30	1-25	49.44



2 Pole RCBO 10kA

** 1 MOD RESIDUAL CURRENT BREAKER with Overcurrent Protection (RCBO) 6kA

The 1 Mod 6kA range is **Type A** 1P + N RCBO and **MUST ONLY** be supplied from the **bottom**. The products are approved and certified according to EN 61009.

GARO RCBO 6kA Type A Rated Voltage 200-415V AC Max Torque 3 Nm Protection Class IP20

2 Pole 6kA Curve - B

Item	Rated (A)	Modules	Poles	mA	For cable size mm ²	Trade Price
RCBO GI B06	6	1	1 + N	30	1-6	39.88
RCBO GI B10	10	1	1 + N	30	1-6	39.88
RCBO GI B16	16	1	1 + N	30	1-6	39.88
RCBO GI B20	20	1	1 + N	30	1-6	39.88
RCBO GI B25	25	1	1 + N	30	1-6	39.88

2 Pole 6kA Curve - C

Item	Rated (A)	Modules	Poles	mA	For cable size mm ²	Trade Price
RCBO GI C06	6	1	1 + N	30	1-6	39.88
RCBO GI C10	10	1	1 + N	30	1-6	39.88
RCBO GI C16	16	1	1 + N	30	1-6	39.88
RCBO GI C20	20	1	1 + N	30	1-6	39.88
RCBO GI C25	25	1	1 + N	30	1-6	39.88



1 Mod 2 Pole RCBO

ACCESSORIES

Item	Description	Modular Length	For cable size mm ²	Trade Price
AS-35-SLISOSO	Terminal Connector		35	2.01
SKN0021-10	SP Busbar 10 mm ² to suit 1mod RCBO	12		14.92
SKN0029-10	TP Busbar 10 mm ² to suit 1mod RCBO	12		24.73

RESIDUAL CURRENT BREAKER with Overcurrent Protection (RCBO) 10kA Long

An RCBO is a combination of an RCCB and MCB. The 10kA Long range is **Type A** and is 1P + N. The products are approved and certified according to EN 61009.

GARO RCBO 10kA Type A Rated Voltage 200-415V AC Max Torque 3 Nm Protection Class IP20

2 Pole 10kA Curve - B

Item	Rated (A)	Modules	Poles	mA	For cable size mm ²	Trade Price
RCBOLIB06A	6	1	2	30	1-6	44.40
RCBOLIB10A	10	1	2	30	1-6	44.40
RCBOLIB16A	16	1	2	30	1-6	44.40
RCBOLIB20A	20	1	2	30	1-6	44.40
RCBOLIB25A	25	1	2	30	1-6	44.40
RCBOLIB32A	32	1	2	30	1-6	44.40
RCBOLIB40A	40	1	2	30	1-6	46.05
RCBOLIB45A	45	1	2	30	1-6	46.05



2 Pole 10kA Curve - C

Item	Rated (A)	Modules	Poles	mA	For cable size mm ²	Trade Price
RCBOLIC06A	6	1	2	30	1-6	44.40
RCBOLIC10A	10	1	2	30	1-6	44.40
RCBOLIC16A	16	1	2	30	1-6	44.40
RCBOLIC20A	20	1	2	30	1-6	44.40
RCBOLIC25A	25	1	2	30	1-6	44.40
RCBOLIC32A	32	1	2	30	1-6	44.40
RCBOLIC40A	40	1	2	30	1-6	46.05
RCBOLIC45A	45	1	2	30	1-6	46.05

RESIDUAL CURRENT CIRCUIT BREAKER (RCBO) 10 kA ****EV TYPE B***

An RCBO is a combination of an RCCB and MCB. This 10kA range is **Type B** and can be supplied from the top or bottom. The products are approved and certified according to EN 61009.

GARO RCBO 10kA Type B Rated Voltage 200-415V AC Max Torque 3 Nm Protection Class IP20

Item	Rated (A)	Modules	Poles	mA	For cable size mm ²	Trade Price
2 Pole 10kA Curve - B - TYPE B						
RCBOGRB06M4B	6	4	2	30	1-25	399.81
RCBOGRB10M4B	10	4	2	30	1-25	399.81
RCBOGRB13M4B	13	4	2	30	1-25	399.81
RCBOGRB16M4B	16	4	2	30	1-25	399.81
RCBOGRB20M4B	20	4	2	30	1-25	399.81
RCBOGRB25M4B	25	4	2	30	1-25	399.81
RCBOGRB32M4B	32	4	2	30	1-25	399.81
RCBOGRB40M4B	40	4	2	30	1-25	399.81



2 Pole 10kA Curve - C - TYPE B

RCBOGRC06M4B	6	4	2	30	1-25	399.81
RCBOGRC10M4B	10	4	2	30	1-25	399.81
RCBOGRC13M4B	13	4	2	30	1-25	399.81
RCBOGRC16M4B	16	4	2	30	1-25	399.81
RCBOGRC20M4B	20	4	2	30	1-25	399.81
RCBOGRC25M4B	25	4	2	30	1-25	399.81
RCBOGRC32M4B	32	4	2	30	1-25	399.81
RCBOGRC40M4B	40	4	2	30	1-25	399.81

DIGITAL TIMERS

Digital and Astronomical (SOLAR) time switches with daily and weekly adjustable programs. Battery reserve of 3 years (Li-ion type CR-2032). Charge reserve of 1 minute (for battery replacement). Halogen and incandescent = 1500W (@ 240V). Fluorescent = 600W (@ 240V)

ELECTRONIC TIME SWITCHES

£

Item	Modules	Channels	Relay Capacity	Trade Price
DV1KT3	2	1	250V AC - 16(10)A	84.58
DV2K	2	2	250V AC - 16(10)A	128.13
DV1K1M	1	1	250V AC - 16(10)A	140.97



DV1KT3



DV1K 1M

Item	Modules	Channels	Relay Capacity	Programable	Trade Price
ASTRO1KT3	2	1	250V AC - 16(10)A	Dusk to Dawn	129.00
ASTRO2KT3	2	2	250V AC - 16(10)A	Dusk to Dawn	149.43



ASTRO2KT3

MECHANICAL & ELECTROMECHANICAL TIMERS

ELECTROMECHANICAL TIME SWITCHES

£

Item	Modules	Relay Capacity	Quadrant Type	Intervention Time (min)	Intervention Precision	Trade Price
D1M MEK	1	250V AC - 16(4)A	24 hours - 96 trips x 15 mins	15 mins	+/- 5 mins	41.55
D3M MEK	3	250V AC - 16(4)A	24 hours - 48 trips x 30 mins	30 mins	+/- 7.5 mins	52.51
V3M MEK	3	250V AC - 16(4)A	168 hours - 48 trips x 3.5 hrs	3.5 hours	+/- 52.5 mins	95.26



V3M MEK

Time switches with daily and weekly adjustable programs. Power reserve of up to 150 hours. Din rail mounting



D1M MEK

MULTIFUNCTION TIMER

Item	Description	Modules	Capacity	Functions	Trade Price
GCRM - 91H	Multifunction Time Relay	1	16A AC-DC 12-240V	10 x 0.15 - 10 days	46.07



TEST RELAYS & TIME LAG SWITCHES

Item	Description	Contact	Trade Price
DCTU	Emergency Light Test Relay - Din Rail mounting	1 x c-o	54.44
GTA8	Staircase Timer, 1-7 minutes		41.71



DCTU

KILOWATT HOUR METERS

Din rail mounted energy meters

Din rail mounted energy meters with pulse outputs.

Item	Description	Measures	Modules	Rated Current (A)	Trade Price
GNM1D	Garó SP Meter 45A Pulse MID	KWH, KW, V & A	1	45	66.61
GNM1D-RS485	Garó SP Meter 45A Modbus MID	KWH, KW, V & A	1	45	76.22
GNM1D-100-RS485	Garó SP Meter 100A Bi-directional Modbus	KWH, KW, V & A	2	100	143.74
GNM3D	Garó TP 65A Meter Pulse MID	KWH, KW, V & A	4	63	152.43
GNM3D-RS485	Garó TP 65A Meter Modbus MID	KWH, KW, V & A	4	63	193.13
GNM3TD	Garó MFM Dual RJ11 Input Pulse + Modbus	KWH, KW, V & A	4	160-630	300.04
GNT160	160A TP CT RJ11 150 cm Lead		CT	160	86.18
GNT250	250A TP CT RJ11 150 cm Lead		CT	250	100.69
GNT630	630A TP CT RJ11 150 cm Lead		CT	630	116.95
GNM3T-RS485	Garó MFM 5A CT Input Pulse + Modbus	KWH, KW, V & A	4	6000	233.78
GDT36-300A	300 / 5A Split Core CT	Set of 3			484.32
GDT36-600A	600 / 5A Split Core CT	Set of 3			519.20



GNM1D



GNM3TD & GNT630

CONTACTORS

Modular contactors for din rail mounting

Item	Contacts	Poles	Modules	Rated AC-1[A]	Coil Voltage (V)	Coil Type	Trade Price
GK20-1NO1NC	1 NO + 1 NC	2	1	20	230	AC	19.82
GK20-2NO	2 NO	2	1	20	230	AC	27.84
GK20-2NC	2 NC	2	1	20	230	AC	32.43
GK24-4NO	4 NO	4	2	25	230	AC-DC	33.40
GK24-4NC	4 NC	4	2	25	230	AC-DC	38.08
GK32-2NO	2 NO	2	1	32	230	AC-DC	38.55
GK32-4NO	4 NO	4	2	32	230	AC-DC	37.66
GK40-1NO	1 NO	1	1	40	230	AC-DC	50.19
GK40-4NO	4 NO	4	3	40	230	AC-DC	79.77
GK40-2NO2NC	2 NO + 2 NC	4	3	40	230	AC-DC	107.76
GK63-4NO	4 NO	4	3	63	230	AC-DC	104.97



GK40 - 2NO 2NC

ACCESSORIES FOR CONTACTORS

Item	Description	Modules	Trade Price
GKD	Distance Piece, 12gm, temperatures < 40 ° C	0,5	3.74
GKN 11	Auxiliary Contacts		18.54



GKD

COMPONENTS

SURGE PROTECTION DEVICES

CLASS 1 SURGE PROTECTION DEVICES

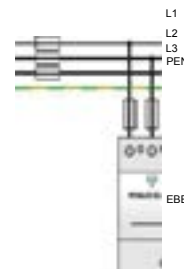
Item	Poles	Class	Signal Relay	Impulse Current (10-350)uS	Max Current (8-20)uS	Back up Fuse Maximum	Trade Price
BSR 275 3pol	3	1, 11, 111	yes	25KA per pole	100KA per pole	250A gl	517.09
BSR 275 4pol	4	1, 11, 111	yes	25KA per pole	100KA per pole	250A gl	685.00
GPTT1-300-3+0LHR	3	1, 11	yes	25KA per pole	100KA per pole	160A gl	270.69
GPTT1-300-4+0LHR	4	1, 11	yes	25KA per pole	100KA per pole	160A gl	351.23



BSR 275 3pol

Category IEC-EN : Class 1 - Type 1
 Location of use : Main distribution board
 Network: TNC-S
 In (8-20) : 25kA per pole
 I_{max} (8-20) : 25kA per pole
 Standard : IEC61643-1

L1
L2
L3
PEN



GPTT1-300-4+0LHR

CLASS 11 SURGE PROTECTION DEVICES

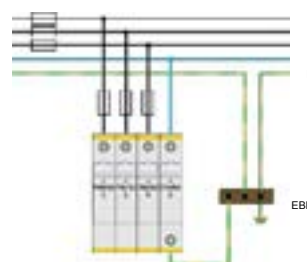
Item	Poles	Class	Signal Relay	Impulse Current (10-350)uS	Back up Fuse Maximum	Trade Price
GPTT2-300-1-0	1	11	no	5KA per pole	125A	33.49
GPTT2-300-1-0-R	1	11	yes	5KA per pole	125A	46.76
GPTT2-300-2-0	2	11	no	5KA per pole	125A	64.30
GPTT2-300-2-0-R	2	11	yes	5KA per pole	125A	82.33
GPTT2-300-3-0	3	11	no	5KA per pole	125A	96.39
GPTT2-300-3-0-R	3	11	yes	5KA per pole	125A	122.12
GPTT2-300-4-0	4	11	no	5KA per pole	125A	128.60
GPTT2-300-4-0-R	4	11	yes	5KA per pole	125A	158.19
GPT275plug	1	11	yes	5KA per pole	125A	37.49



GPTT2-300-4-0

Category IEC-EN : Class 11 - Type 11
 Location of use : Main - Sub distribution board
 Network: TNC-S
 In (8-20) : 5kA per pole
 I_{max} (8-20) : 20kA per pole
 Standard : IEC61643-1

L1
L2
L3
N
PE



G-GPT2

SURGE PROTECTION DEVICES

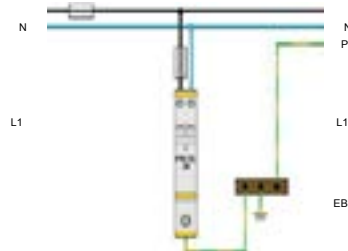
CLASS 111 SURGE PROTECTION DEVICES

Item	Poles	Class	Signal Relay	Impulse Current (10-350) μ S	Max Current (8-20) μ S	Backup Fuse Maximum	Trade Price
PDM 320	1	111	no	n-a	10KA per pole	63A	86.24
PDMR 320	1	111	yes	n-a	10KA per pole	63A	101.17
PDM 320plug	1	111	yes	n-a	10KA per pole	63A	77.83
GTS 170	1	111	yes	n-a	20KA per pole	63A	110.49
GTS 170plug	1	111	yes	n-a	20KA per pole	63A	91.63



PDM 320

Category IEC-EN : Class 111 - Type 111
 Location of use : Sub - Local distribution board
 Network : TNC-S
 In (8-20) : 5kA per pole
 I_{max} (8-20) : 10kA per pole
 Standard : IEC61643-1



MODULAR ISOLATOR & CHANGEOVER SWITCHES

Rated 10A - 100A, AC22 and certified to EN60947-3.

Item	Type	AC21-AC22 (A)	Modules	Poles	Operating Voltage V	For cable size mm ²	Trade Price
							£
With dolly							
GSV 1100	Isolator	100	1	1	230	35	9.21
GSV 2100	Isolator	100	2	2	400	35	19.26
GSV 3100	Isolator	100	3	3	400	35	30.08
GSV 4125	Isolator	125	4	4	400	35	47.34



GSV 2100

Item	Type	AC21-AC22 (A)	Modules	Poles	Operating Voltage V	Trade Price	
						£	
With toggle							
Enclosure class IP20							
HOA 1	H-O-A	10	2	1	440	37.70	
HOA 2	H-O-A	10	2	2	440	37.70	



HOA 1

BELL TRANSFORMER & CHIME

Item	Description	Modules	Rated Current	Trade Price
TRAN 8-12-24	Bell transformer	2	230-8V,12V,24V 1A	16.07
BIM85	Door Chime (Double Sound)			14.15



TRAN8-12-24

ACCESSORIES

Terminals and Connectors

Item	Description	Trade Price
AS25-SN	Cable Connector Pin to suit 25 mm ² cable	1.91
AS25-GN	Cable Connector Fork to suit 25 mm ² cable	1.91
AS35-S	Cable Connector Pin to suit 35 mm ² cable	2.14
AS-35-SLISOSO	Cable Connector Pin to suit 35 mm ² cable. 27mm PITCH	2.01
AS50-SN	Cable Connector Pin to suit 50 mm ² cable. 15mm PITCH	3.38
E7	Earth Terminal Block 7 Way 16 mm ² clips to DIN rail	2.23
N7	Neutral Terminal Block 7 Way 16 mm ² clips to DIN rail	2.23
BRASS 9	9 Way Brass Terminal for Garo Consumer Units	2.13
BRASS 18	18 Way Brass Terminal for Garo Consumer Units	5.58
BRASS 3LA	18 Way Brass Terminal for LA Consumer Units	5.58
BRASSBAR	Brass Terminal 6.5 x 9 x 288mm	7.74
BRASSBAR1M	N-E Terminal Block 153 way (1 metre)	20.54
KKS1-2	Supports for N-E Terminal Block (1 metre)	1.13
NPE35	Earth - Neutral Terminal 160A to suit 35 mm ² cable	12.57
NPE120	Earth - Neutral Terminal 250A to suit 120 mm ² cable	40.39
TBN185	Earth - Neutral Terminal 400A to suit 185 mm ² cable	57.12
DISCT6US	Disconnect Test Terminal	5.12
EPDISCT6U	End Plate for Disconnect Terminal	0.43



AS-35-SLISOSO



N7



AS25-GN



AS50-SL



AS25-SN



E7



ASF35-SN

BUSBAR

Pin type busbar with insulation

Item	Description	Current capacity with end input (A)	Current capacity with central input (A)	Trade Price
S-1L-1000-10I	10 mm ² 1-phase, 57 mod	63	100	13.68
S-2L-1000-10	10 mm ² 2-phase, 57 mod	63	100	22.29
S-3L-1000-10	10 mm ² 3-phase, 57 mod	63	100	27.56
S-3L-1000-16	16 mm ² 3-phase, 57 mod	80	130	41.93
S-4L-1000-16	16 mm ² for 4 Pole RCCB	80	130	59.82
S-1L-2MOD-10ISO	10mm ² 1-phase 2mod insulated busbar			0.60
S-1L-27-1000	16 mm ² 1-phase	80	130	40.85
S-3L-27-1000	16 mm ² 3-phase, for do - neoz fuse holders	80	130	51.66
S-1L-145-10-ISO	10 mm ² 1-phase, 8 mod	63	100	1.70
S-1L-210-10-ISO	10 mm ² 1-phase, 12 mod	63	100	3.17



Fork type busbar with insulation

G-1L-1000-10ISO	10 mm ² 1-phase, 57 mod	63	100	12.80
G-2L-1000-10M5	10 mm ² 2-phase, 57 mod	63	100	24.28
G-3L-1000-10CM5	10 mm ² 3-phase, 57 mod	63	100	27.03
G-L1-N-L2-N-L	16 mm ² 3-phase+N, 57 mod	80	130	67.77
G-4L-1000-16				72.62



TERMINAL BLOCKS

Item		Size	Colour	Trade Price
GKL 1x50 GRE	Terminal Block A Class	1 x 50	Grey	4.73
GKL 2x50 GRE	Terminal Block A Class	2 x 50	Grey	8.61
GKL 1x50 BLE	Terminal Block A Class	1 x 50	Blue	4.73
GKL 2x50 BLE	Terminal Block A Class	2 x 50	Blue	8.83
GKL 1x50 G-G	Terminal Block A Class	1 x 50	Green/Ylw	4.98
GKL 2x50 G-G	Terminal Block A Class	2 x 50	Green/Ylw	9.08
GKL 1x95 GRE	Terminal Block A Class	1 x 95	Grey	12.15
GKL 2x95 GRE	Terminal Block A Class	2 x 95	Grey	24.34
GKL 1x95 BLE	Terminal Block A Class	1 x 95	Blue	11.96
GKL 2x95 BLE	Terminal Block A Class	2 x 95	Blue	24.32
GKL 1x95 G-G	Terminal Block A Class	1 x 95	Green/Ylw	12.06
GKL 2x95 G-G	Terminal Block A Class	2 x 95	Green/Ylw	24.35
GKL 1x150 GRE	Terminal Block A Class	1 x 150	Grey	21.09
GKL 2x150 GRE	Terminal Block A Class	2 x 150	Grey	42.71
GKL 1x150 BLE	Terminal Block A Class	1 x 150	Blue	20.27
GKL 2x150 BLE	Terminal Block A Class	2 x 150	Blue	42.71
GKL 1x150 G-G	Terminal Block A Class	1 x 150	Green/Ylw	20.77
GKL 2x150 G-G	Terminal Block A Class	2 x 150	Green/Ylw	42.71
GKL 1x240 GRE	Terminal Block A Class	1 x 240	Grey	33.16
GKL 2x240 GRE	Terminal Block A Class	2 x 240	Grey	56.29
GKL 1x240 BLE	Terminal Block A Class	1 x 240	Blue	33.15
GKL 2x240 BLE	Terminal Block A Class	2 x 240	Blue	56.29
GKL 1x240 G-G	Terminal Block A Class	1 x 240	Green/Ylw	33.15



GROUP LINK BOX

Item	Description	Height mm	Width mm	Depth mm	Trade Price
GKLM 2x16 NCG	16sq GRP link box	190	144	131	128.47
GKLM 2x50 NCG	50sq GRP link box	255	180	139	213.48
GKLM 2x95 NCG	95sq GRP link box	380	280	171	399.69



GKLM 2x16 NCG

BLANKING STRIP METAL & PLASTIC

Item	Description	Trade Price
Covers the empty spaces in the front cover of distribution enclosures		
METAL BLANK	1 Mod Metal Blank	4.28
TC-1A	Plastic 4.5 modules - easily cut into desired size	1.03
ZA2W	57 modules (1 metre)	6.04



ZA2W

FUSE DISCONNECTORS

Item	Rating (A)	Poles	Size	Trade Price
EFD 101P	32A	1	10 x 38	3.11
EFD 102P	32A	2	10 x 38	6.82
EFD 103P	32A	3	10 x 38	9.81
EFD 221P	100A	1	22 x 58	11.96
EFD 223P	100A	3	22 x 58	38.68



EFD 101P



EFD 103P



EFD 221P



EFD 223P

ENCLOSURES



18th EDITION
COMPLIANT



CE CERTIFIED



ENHANCED
PROTECTION



COMPREHENSIVE
WARRANTIES

PLASTIC ENCLOSURES IP65

Our range of distribution enclosures come with transparent reversible doors which can be sealed.

They are made from halogen free long-lasting plastic material and are equipped with dust caps, for wall mounting screws, and 1-4 quick locking secured screws.

Enclosures have supports for fixing mounting plates. Cable entries are metric.

Item	Description	IP Rating	Width mm	Height mm	Depth mm	Trade Price
CDN4G	1 x 3 Mod Enclosure	65	84	174	111	16.33
GCUT 4	1 x 4 Modules DIN Rails	65	166	231	113	25.95
GCUT 6	1 x 6 Modules DIN Rails	65	202	231	113	27.43
GCUT 8	1 x 8 Modules DIN Rails	65	238	231	118	33.37
GCUT 112	1 x 12 Modules DIN Rails	65	310	246	148	37.92
GCUT 118	1 x 18 Modules DIN Rails	65	418	246	148	63.37
GCUT 224	2 x 12 (24) Modules DIN Rails	65	310	436	148	67.28
GCUT 236	2 x 18 (36) Modules DIN Rails	65	418	436	148	105.47
GCUT 336	3 x 12 (36) Modules DIN Rails	65	310	586	148	100.49
GCUT 354	3 X 18 (54) Modules DIN Rails	65	418	586	148	152.21
** Din rails can be mounted at two different heights						
GCUT N - E	N + E Bar for GCUT 112 - GCUT 354					19.86

£



BT2 - GO



BT 4 - GO



GCUT 4



GCUT 6



GCUT 112



GCUT 224



GCUT 336

GCUT TECHNICAL DATA

Degree of protection	IP65	Glow wire rating	650° C
Resistance to impact	IK08	Ball pressure test	70° C
Auto-extinguishing degree	HB (UL94)		

According to 2006-95-CE directive and EN 60439-1 and UNE-EN 60439-3 norms on affected parts.

DISTRIBUTION ENCLOSURES IP 40 - IP41

GM Metal Enclosures

£

Item	IP Rating	Modules	Rows	Width mm	Height mm	Depth mm	Trade Price
GM 1-14	40	14	1	335	300	111	146.61
GM 1-25	40	25	1	515	300	111	203.57
GM 2-28	40	28	2	335	425	111	192.20
GM 2-50	40	50	2	515	425	111	237.86
GM 3-42	40	42	3	335	550	111	205.92
GM 3-75	40	75	3	515	550	111	274.99
GM KEYLOCK	Lock and key set for GM boards (except GM 1-6)						36.20



GM1-14

ENCLOSED SWITCHGEAR



18th EDITION COMPLIANT



CE CERTIFIED



ENHANCED PROTECTION



COMPREHENSIVE WARRANTIES

SAFETY SWITCHES ENCLOSED - AC - IP65

AC Polycarbonate Safety Switches

Item	Rating (A)	Poles	IP Rating	Width mm	Height mm	Depth mm	Trade Price
SIAC420IP65	20	4	65	100	125	85	24.00
SIAC425IP65	25	4	65	100	125	85	25.00
SIAC432IP65	32	4	65	114	125	102	28.00
SIAC440IP65	40	4	65	114	172	102	34.00
SIAC463IP65	63	4	65	114	172	102	36.00
SIAC480IP65	80	4	65	156	238	120	58.00
SIAC4100IP65	100	4	65	156	238	120	68.00



SOLAR SAFETY SWITCHES ENCLOSED DC IP65

DC Polycarbonate Safety Switches

Item	Rating (A)	Poles	IP Rating	Width mm	Height mm	Depth mm	Trade Price
SIDC416 IP65	16	4	65	96	180	80	32.00
SIDC432 IP65	32	4	65	96	180	80	36.00



ISOLATOR SWITCHES ENCLOSED IP55 METAL 3 POLE

Metalclad Isolator Switches 3 Pole - IP55

Item	Rating (A)	Poles	Enclosure Size	IP Rating	Width mm	Height mm	Depth mm	Trade Price
GSW363 IP55M	63	3	1	55	300	200	150	187.46
GSW3125 IP55M	125	3	2	55	400	300	200	315.94
GSW3200 IP55M	200	3	2	55	400	300	200	405.29
GSW3250 IP55M	250	3	2	55	400	300	200	478.66
GSW3400 IP55M	400	3	3	55	600	500	250	703.54



GSW3200 IP55M

ISOLATOR SWITCHES ENCLOSED IP55 METAL 4 POLE

Metalclad Isolator Switches 4 Pole - IP55

£

Item	Rating (A)	Poles	IP Rating	Width mm	Height mm	Depth mm	Trade Price
GSW463IP55M	63A	4	55	200	300	150	207.07
GSW4125IP55M	125A	4	55	300	400	200	340.82
GSW4200IP55M	200A	4	55	300	400	200	411.02
GSW4250IP55M	250A	4	55	300	400	200	508.76
GSW4400IP55M	400A	4	55	500	600	250	743.80



GSW4200 IP55M

ENCLOSED SWITCHGEAR

FUSE SWITCHES - ENCLOSED IP55 - BS Type METAL 3 POLE

Metalclad Fuse Switches 3 Pole - IP55

Item	Rating (A)	Poles	Fuse Size	Enclosure Size	IP Rating	Width mm	Height mm	Depth mm	Trade Price
GFS332 IP55MBS	32	3	A1	1	55	300	200	150	227.15
GFS363 IP55MBS	63	3	A2-A3	2	55	400	300	200	356.04
GFS3100 IP55MBS	100	3	A4	3	55	400	300	200	440.89
GFS3125 IP55MBS	125	3	A3-A4	3	55	400	300	200	453.58
GFS3160 IP55MBS	160	3	B1-B2	3	55	600	300	200	879.52
GFS3200 IP55MBS	200	3	B1-B2	3	55	600	500	250	879.52
GFS3400 IP55MBS	400	3	B1-B4	4	55	600	500	250	938.21



CHANGEOVER SWITCHES - ENCLOSED IP55 METAL 3 POLE

Metalclad Changeover - IP55

£

Item	Rating (A)	Poles	IP Rating	Width mm	Height mm	Depth mm	Trade Price
GCO3125IP55M	125	3	55	500	400	250	890.81
GCO3160IP55M	160	3	55	500	400	250	949.90
GCO3200IP55M	200	3	55	500	400	250	1,060.89
GCO3250IP55M	250	3	55	500	400	250	1,182.97
GCO3400IP55M	400	3	55	500	400	250	1,337.78



CO 160 IP55M

CHANGEOVER SWITCHES - ENCLOSED IP55 METAL 4 POLE

Metalclad Changeover 4P - IP55

£

Item	Rating (A)	Poles	IP Rating	Width mm	Height mm	Depth mm	Trade Price
GCO4125IP55M	125A	4	55	400	500	250	864.73
GCO4160IP55M	160A	4	55	400	500	250	920.72
GCO4200IP55M	200A	4	55	400	500	250	1,059.92
GCO4250IP55M	250A	4	55	400	500	250	1,179.94
GCO4400IP55M	400A	4	55	400	500	250	1,335.24



THE ULTIMATE CHARGING SOLUTION.

Smart charging stations for every application - Home, workplace, Apartment buildings, car parks and upgrading your fleet.



EXCELLENT CUSTOMER SERVICE



NATIONWIDE SUPPORT



BACK OFFICE SOLUTIONS



80 YEARS
OF EXPERTISE

entity.

**Innovation.
Safety.
Quality.
Convenience.
Control.**



NEW Range!



entity

NEW! WALL MOUNTED CHARGER

PRO

	Entity Pro
Basic Charging	Y
Socket or Tethered Option	Y
Motorised Interlock	Y
Output Options 6 - 32A set by dip switch	Y
Metering	Y
Dynamic Load Balancing	Y
Built-in DC Leakage Control	Y
Wi-Fi Module	Mesh Wifi
Communication	Dual Lan & Dual Sim
RFID access control	Y
Cloud Reporting system	Full OCPP

NEW! WALL CHARGER SINGLE

Item	Model Type & Connection	Trade Price
Entity Pro Single		
EPCSO00132SIGIPEN	Entity Pro 1-ph, 4G, PME, outlet, 32A	£1,824.22
EPCSO00332SIGI	Entity Pro 3-Ph, 4G Phase balancing, outlet, 32A	£1,873.96
EPCS40332SIGI	Entity Pro 3-ph, 4G, phase balancing, cable 32A 4m	£1,995.93
EPCSO00332SVGI	Entity Pro 3-Ph, 4G Phase balancing, outlet, 32A, MID	£2,086.15



NEW! WALL CHARGER DOUBLE

Item	Model Type & Connection	Trade Price
EPCSO00332SIGIO	Entity Double Pro 3-Ph, 4G Phase balancing, outlet, 32A	£3,877.87
EPCSO00332SVGIO	Entity Double Pro 1-ph, 4G, PME, outlet, 32A	£3,682.08





ENTITY Pro charger without front and back Installation plate

Item	Description	Trade Price
EPCUO00132SIGIPEN	Charging unit Pro 1-Ph, 4G Phase balancing, outlet, 32A	£1,776.57
EPCUO00332SIGI	Charging unit Pro 3-Ph, 4G Phase balancing, outlet, 32A, MID	£1,804.66
EPCU40332SIGI	Charging unit Pro 3-Ph, 4G Phase balancing, cable, 20A	£1,881.57
EPCUO00332SVGI	Charging unit 3-ph, 4G, Phase balancing, cable 32A 4m	£2,009.59

ENTITY Pro Installation Back Plate

Item	Description	Trade Price
EPIBSO	Pro Installation Single Back Plate	117.16
EPIBDO	Pro Installation Double Back Plate	179.75



ENTITY Pro Front Protection Cover

Item	Description	Trade Price
EPPC	Entity Pro Protection Cover	£34.96

ENTITY Pro Installation back plate c/w front protection cover

Item	Description	Trade Price
EPIBS	Entity Pro Single Installation Bracket with Front Cover	£131.86
EPIBD	Entity Pro Dual Installation Bracket with Front Cover	£238.89



NEW! ENTITY EV ACCESSORIES

Entity Installation Poles

Item	Description	Trade Price
MVRF	In Ground Pole 1550mm Diameter 60mm	£125.46
MVRP	Plinth Mounted Pole 750mm diameter 60mm	£96.40
EPPFS	Entity Pro Pole mount back plate & bracket single 60mm	£109.38
EPPFD	Entity Pro Dual Installation Bracket Front Cover	£171.39



EPPFS



MVRP

Entity Ground Mounted Stands

Item	Description	Trade Price
EPGSS	Entity Pro Ground Stand single and back to back	£456.49
EPGSD	Entity Pro Ground Stand Dual side by side and back to back	£701.72
EPGCA	Concrete anchor bolts and bracket for Entity stand	£262.83
EPSSC	Entity Pro Ground stand Installation kit and Terminals	£116.74
EPGSH	Entity Stand Mounted Cable Hook	£36.61
EWH	Entity Wall Mounted Cable hook	£51.16



EPGCA



EPGSD

EPGSS

NEW! ENTITY EV ACCESSORIES

Item	Description	Trade Price
ELIB	Entity load interface unit BASIC	£485.01
ELIA	Entity load interface unit ADVANCED	£543.01
ELIANT	Current transformer KIT 100A/333mV	£97.10
EPEA	External Antenna Kit (wifi)	£69.25



NEW! ENTITY FRONT COVERS

ENTITY Front Covers

EPFCB	GARO Entity Pro Front Cover Black	£30.59
EPFCG	GARO Entity Pro Front Cover Grey	£41.68
EPFCW	GARO Entity Pro Front Cover White	£41.68
EPFCR	GARO Entity Pro Front Cover Red	£41.68



DUAL WALL MOUNTED CHARGER - GTB STANDARD

	GTB With Meters
Mode 3 Charging	Y
Socket or Tethered Option (FC)	Y
Motorised Interlock	Y
Output Options 6 - 32A (set by dipswitch)	Y
Available Output Range 7.4kW - 22kW	Y
Pillar Mounting	O
Primary Secondary Configuration (max 32 chargers)	Y
Metering	Y
Dynamic Load Balancing *	Y
Built-in DC Leakage Control	Y
RFID access control	Y
OCPP 1.6	Y
"O" Optional Extra	
* Note: Dynamic Load Balancing requires meter GNM3D-RS485 or GNM1D-100-RS485 (sold separately)	

GTB+ OCPP/OZEV with Meters

Item	Model Type & Connection	Trade Price
LAN Version		
GTBBDCM274WORLUK	OCPP 2 X 7.4kw Dual Charger LAN, Meter RFID	£5,634.92
GTBBDCM222WORLUK	OCPP 2 X 22kw Dual Charger LAN Meter RFID	£6,161.24
4G Version		
GTBBDCM274WORMUK	OCPP 2 X 7.4kw Dual Charger 4G Meter RFID	£6,098.58
GTBBDCM222WORMUK	OCPP 2 X 22kw Dual Charger 4G Meter RFID	£6,925.65



EV ACCESSORIES

Item	Description	Trade Price
GNM3D-RS485	Three Phase DLM or local Meter 63 Amps	193.13
DLM300	Three Phase CT DLM Meter 300 Amps	847.34
DLM600	Three Phase CT DLM Meter 600 Amps	847.81
GTB-PB-TUBE60	GTB Post Bracket 60mm (to be used with MVRP or MVRF)	125.46
MVRF	In Ground Fixing.. Post 1550mm for GLBFD/ST-GHL/LS4-PM	125.46
MVRP	Plate mounted post 750mm for GTB	96.40
GTB-PB-OVAL	GTB Post Bracket (to be used with MVR-AB)	195.65
MVR-AB	Plate Mounted post Oval for GTB	323.95



GTB-PB-TUBE60

Communication & Access

RFID Cards	Pack of 5 RFID cards	68.07
RFID Tags	Pack of 5 RFID Tags	68.07



MVRP

MVRF

STREET CHARGER - LS4

OCPP / OZEV*

	LAN	MC
Basic Charging	Y	Y
Type 2 Sockets	x 2	x 2
Motorised Interlock	Y	Y
Output Factory Set	Y	Y
Dynamic Load Balancing (see external meters below)	Y	Y
Metering	Y	Y
Core Balanced Protection (no nuisance tripping)	Y	Y
Full Open OCPP	Y	Y
PC Browser Interface	Y	Y
LAN	Y	O
RFID access control	Y	Y
DC Leakage Protection	Y	Y
Suitable for Wall Mounting	Y	Y
OCPP 1.6	Y	Y
4G Built in Modem	N	Y



Item	Description	Trade Price
LAN Versions		
LS4DCM274WOLANUK	2 x 7.4kw Outlets Metered, LAN & RFID	£6,144.25
LS4DCM222WOLANUK	2 x 22kw Outlets Metered, LAN & RFID	£6,366.50
4G Versions		
LS4DCM274WOMCUK	2 x 7.4kw Outlets Metered, RFID & 4G	£6,514.62
LS4DCM222WOMCUK	2 x 22kw Outlets Metered, RFID & 4G	£6,736.84

LS4 ACCESSORIES

Item	Description	Trade Price
GNM3D-RS485	Three Phase DLM or local Meter 63 Amps	193.13
DLM300	Three Phase CT DLM Meter 300 Amps	847.34
DLM600	Three Phase CT DLM Meter 600 Amps	847.81
LS4-PM	LS4 Fixing Bracket for MVRF	76.06
MF-LS4	LS4 Foundation support	185.21
VF-LS4	Ground/ Wall Mounted Pedestal	86.94



GNM3D-RS485



Wall Mount

EV Charging Cables

Item	Description	Trade Price
CCM32T2T1-5	Type 2 to Type 1 32A 240V 5 Meter EV Charging Cable	495.84
CCM32T2T2-5	Type 2 to Type 2 32A 240V 5 Meter EV Charging Cable	461.25
CCM32T2T2-8	Type 2 to Type 2 32A 240V 8 Meter EV Charging Cable	499.67
CCM32T2T2-10	Type 2 to Type 2 32A 240V 10 Meter EV Charging Cable	544.54
CCT32T2T2-5	Type 2 to Type 2 32A 400V 5 Meter EV Charging Cable	499.67
CCT32T2T2-8	Type 2 to Type 2 32A 400V 8 Meter EV Charging Cable	576.56
CCT32T2T2-10	Type 2 to Type 2 32A 400V 10 Meter EV Charging Cable	659.57

QC24 - 24KW DC RAPID EV CHARGING STATION - PEDALSTALQ24CC

- Charges EV cars in less than 1 hour (typically)
- One charging output, either CCS Combo or CHAdeMO
- Compact design for fast & economic installation
- Maintenance free cooling system without air filter
- Compatible with all AC networks, 1-Phase & 3-Phase
- Robust design for outdoor use (IP 55 / IK 10)
- Dual Modem for separate operation & maintenance activities
- OCPP1.6 compliant for Smart Charging
- Front panel & user menu are customisable
- Wall pedestal mounted

Main Applications:

- Car Dealerships
- Service Centres
- Enterprise fleet
- Utility vehicle fleet



QC50 - 50KW DC RAPID EV CHARGING STATION

- Premium solution for public charging environments
- 360° Lighting strip allows users to see the units charging status
- Strong and corrosion resistant metal cover
- Simple Touch Screen
- Easy to use, reliable & durable
- Full Control with RFID
- Customisable with your branding
- 1 x CHAdeMO Tethered Lead, 1 x CCS Tethered Lead
- OCPP1.6 compliant for Smart Charging
- Weight: 280 kg
- Mounted: Floor
- Dimensions: 1,955 mm[H] x 600 mm[W] x 540 mm[D]

Main Applications

- Service Stations
- Shopping Centres
- Destination Charging





RAPID 120/80

- MID wattmeters.
- Simultaneous charging at all available power outlets.
- Robust stainless steel enclosure.
- RS 485, Ethernet (switch mode).
- Modbus, MQTT, OCPP.
- Automatic software updates
- Modular electronics. The 120 kW chargers are upgradable to 180 kW.
- CCS charging up to 180 kW. Option of dual CCS.
- Charging in CHAdeMO, up to 80 kW. Only for Duo chargers.
- Auto-retractable cable system.
- AC charging up to 22 kW with Type 2 socket in chargers.
- RGB LED status indicators.
- RFID reader.
- Multi-language 7" colour touchscreen.

Main Applications

- Motorway service stations
- Service Stations
- Shopping Centres
- Destination Charging



INDUSTRIAL PLUGS & SOCKETS



EXCEPTIONAL
VALUE



CE CERTIFIED



WEATHER
PROOF



STRONG &
DURABLE

IP44

Plugs

Item	Pins	Poles	Operating Voltage V	Frequency Hz	Clock Pos	Colour Code	Package size	Trade Price
P216-4S	3	2p + E	100-130	50-60	4	■	10	2.69
P216-6S	3	2p + E	200-250	50-60	6	■	10	2.69
P232-4S	3	2p + E	100-130	50-60	4	■	10	7.45
P232-6S	3	2p + E	200-250	50-60	6	■	10	7.45
P416-6S	5	3p + N + E	200-415	50-60	6	■	10	5.00
P432-6S	5	3p + N + E	200-415	50-60	6	■	10	7.20



P216 - 6S

Sockets

S216-4S	3	2p + E	100-130	50-60	4	■	10	4.48
S216-6S	3	2p + E	200-250	50-60	6	■	10	4.57
S232-4S	3	2p + E	100-130	50-60	4	■	10	9.93
S232-6S	3	2p + E	200-250	50-60	6	■	10	8.70
S416-6S	5	3p + N + E	200-415	50-60	6	■	10	7.20
S432-6S	5	3p + N + E	200-415	50-60	6	■	10	11.94



S 216-4S

Wall Sockets

UI216-4S-RU	3	2p + E	100-130	50-60	4	■	10	7.18
UI216-6S-RU	3	2p + E	200-250	50-60	6	■	10	7.18
UI232-4S-RU	3	2p + E	100-130	50-60	4	■	10	8.70
UI232-6S-RU	3	2p + E	200-250	50-60	6	■	10	11.82
UI416-6S-RU	5	3p + N + E	200-415	50-60	6	■	10	9.46
UI432-6S-RU	5	3p + N + E	200-415	50-60	6	■	10	12.42



UI 232-6 S-RU

IP67

Plugs

Item	Pins	Poles	Operating Voltage V	Frequency Hz	Clock Pos	Colour Code	Package size	Trade Price
PV216-4S	3	2p + E	100-300	50-60	4	■	10	7.46
PV216-6S	3	2p + E	200-250	50-60	6	■	10	6.89
PV232-4S	3	2p + E	100-130	50-60	4	■	10	12.55
PV232-6S	3	2p + E	200-250	50-60	6	■	10	11.07
PV416-6S	5	3p + N + E	200-415	50-60	6	■	2	9.14
PV432-6S	5	3p + N + E	200-415	50-60	6	■	2	11.19



PV 316-4S

Sockets

SV216-4S	3	2p + E	100-300	50-60	4	■	10	9.37
SV216-6S	3	2p + E	200-250	50-60	6	■	10	9.37
SV232-4S	3	2p + E	100-130	50-60	4	■	10	16.29
SV232-6S	3	2p + E	200-250	50-60	6	■	10	11.43
SV416-6S	5	3p + N + E	200-415	50-60	6	■	10	12.24
SV432-6S	5	3p + N + E	200-415	50-60	6	■	10	14.94



SV 316-6S

Wall Sockets

UIV216-4S-RU	3	2p + E	100-300	50-60	4	■	5	14.49
UIV216-6S-RU	3	2p + E	200-250	50-60	6	■	5	12.69
UIV232-4S-RU	3	2p + E	100-130	50-60	4	■	5	16.40
UIV232-6S-RU	3	2p + E	200-250	50-60	6	■	5	16.91
UIV416-6S-RU	5	3p + N + E	200-415	50-60	6	■	5	15.97
UIV432-6S-RU	5	3p + N + E	200-415	50-60	6	■	5	18.41



UIV 316-6S - RU

PLUGS 16A - 63A IP44

Connectable cable size:

16A, 1-2,5 mm²

32A, 2,5-6 mm²

63A, 6 -16 mm²

Degree of protection IP44

Accessories:

16A Cover Type TL216S

32A Cover Type TL232S

63A Cover Type TL63S



P463 - 6S



P216 - 6S

£

Item	Poles	Operating Voltage V	Frequency Hz	Clock pos. Colour code	Package size	Trade Price
P 216-4 S	3 2p + E	100-130	50-60	4 ■	10	2.69
P 216-6 S		200-250	50-60	6 ■	10	2.69
P 232-4 S		100-130	50-60	4 ■	10	7.45
P 232-6 S	4 3p + E	200-250	50-60	6 ■	10	7.45
P 263-6 S		200-250	50-60	6 ■	2	33.08
P 316-4 S		100-130	50-60	4 ■	10	5.68
P 316-6 S	5 3p + N + E	380-415	50-60	6 ■	10	6.00
P 332-6 S		380-415	50-60	6 ■	10	8.52
P 363-6 S		380-415	50-60	6 ■	2	33.92
P 416-6 S	6	200-415	50-60	6 ■	10	5.00
P 432-6 S		200-415	50-60	6 ■	10	7.20
P 463-6 S		200-415	50-60	6 ■	2	35.58

PLUGS WATERTIGHT 16A - 125A IP67

Connectable cable size:

16A 1-2,5 mm²

32A 2,5-6 mm²

63A 6-16 mm²

125A 16-50 mm²

Degree of protection IP67

Accessories: Cover



PV 316-4S



PV 416-6S

Item	Poles	Operating Voltage V	Frequency Hz	Clock pos. Colour code	Package size	Trade Price
PV 216-4S		100-300	50-60	4 ■	10	7.46
PV 216-6S		200-250	50-60	6 ■	10	6.89
PV 232-4S		100-130	50-60	4 ■	10	12.55
PV 232-6S	3 2p + E	200-250	50-60	6 ■	10	11.07
PV 263-4S		100-130	50-60	4 ■	2	42.11
PV 263-6S		200-250	50-60	6 ■	2	38.18
PV 2125-6S		200-250	50-60	6 ■	2	87.04
PV 316-4S		100-130	50-60	4 ■	10	9.83
PV 316-6S		380-415	50-60	6 ■	10	8.14
PV 332-4S	4	100-130	50-60	4 ■	10	13.13
PV 332-6S	3p + E	380-415	50-60	6 ■	10	13.13
PV 363-6S		380-415	50-60	6 ■	2	33.21
PV 3125-6S		380-415	50-60	6 ■	2	98.20
PV 416-6S		200-415	50-60	6 ■	10	9.14
PV 432-6S	5	200-415	50-60	6 ■	10	11.19
PV 463-6S	3p + N + E	200-415	50-60	6 ■	2	37.27
PV 4125-6S		200-415	50-60	6 ■	2	104.46

£

SOCKETS WATERTIGHT 16A - 125A IP67

Waterproof design

Connectable cable size:

16A: 1-2,5 mm²

32A: 2,5-6 mm²

63A: 6-16 mm²

125A: 16-50 mm²

Degree of protection IP67



SV 316-6S



SV 332-4S

Type	Poles	Operating Voltage V	Frequency Hz	Clock pos. Colour code	Package size	Trade Price
SV 216-4S	3 2p + E	100-130	50-60	4 ■	10	9.37
SV 216-6S		200-250	50-60	6 ■	10	9.37
SV 232-4S		100-130	50-60	4 ■	10	16.29
SV 232-6S		200-250	50-60	6 ■	10	11.43
SV 263-4S		100-130	50-60	4 ■	2	60.62
SV 263-6S		200-250	50-60	6 ■	2	46.74
SV 2125-6S	4 3p + E	200-250	50-60	6 ■	2	89.50
SV 316-4S		100-130	50-60	4 ■	10	13.24
SV 316-6S		380-415	50-60	6 ■	10	10.63
SV 332-6S		380-415	50-60	6 ■	10	17.35
SV 363-6S		380-415	50-60	6 ■	2	38.68
SV 3125-6S		380-415	50-60	6 ■	2	104.45
SV 416-6S	5 3p + N + E	200-415	50-60	6 ■	10	12.24
SV 432-6S		200-415	50-60	6 ■	10	14.94
SV 463-6S		200-415	50-60	6 ■	2	49.72
SV 4125-6S		200-415	50-60	6 ■	2	119.39

SOCKETS 16A - 63A IP44

Connectable cable size:

16A: 1-2,5 mm²

32A: 2,5-6 mm²

63A: 6-16 mm²

Degree of protection IP44



S 216-4S



S 216-6S

Type	Poles	Operating Voltage V	Frequency Hz	Clock pos. Colour code	Package size	Trade Price
S 216-4 S		100-130	50-60	4 ■	10	4.48
S 216-6 S		200-250	50-60	6 ■	10	4.57
S 232-4 S	3 2p + E	100-130	50-60	4 ■	10	9.93
S 232-6 S		200-250	50-60	6 ■	10	8.70
S 263-6 S		200-250	50-60	6 ■	2	43.00
S 316-4 S		100-130	50-60	4 ■	10	6.92
S 316-6 S		380-415	50-60	6 ■	10	6.20
S 332-6 S	4 3p + E	380-415	50-60	6 ■	10	8.50
S 363-6 S		380-415	50-60	6 ■	2	46.26
S 416-6 S		200-415	50-60	6 ■	10	7.20
S 432-6 S	5 3p + N + E	200-415	50-60	6 ■	10	11.94
S 463-6 S		200-415	50-60	6 ■	2	50.93

PLUGS ANGLED 16A and 32A IP44

Connectable cable size:

16A: 1-2,5 mm²

32A: 2,5-6 mm²

Degree of protection IP44



PA 216 - 6S

Type	Poles	Operating Voltage V	Frequency Hz	Clock pos. Colour code	Package size	Trade Price
PA 216-6 S	3 2p + E	200-250	50-60	6 ■	10	8.70
PA 416-4 S		100-130	50-60	4 ■	10	13.47
PA 416-6 S	5 3p + N + E	200-415	50-60	6 ■	10	10.29
PA 432-6 S		200-415	50-60	6 ■	10	14.65

PHASE INVERTER 16A and 32A IP44

Connector size:

16A: 1-2,5 mm²

32A: 2,5-6 mm²

Degree of protection IP44.

Accessories:

Covers TL416S, TL432S



FV 416 - 6S

Type	Poles	Operating Voltage V	Frequency Hz	Clock pos. Colour code	Package size	Trade Price
FV 316-6 S	4 2p + N + E	380-415	50-60	6 ■	10	17.03
FV 416-6 S	5 3p + N + E	200-415	50-60	6 ■	10	15.52
FV 432-6 S	5 3p + N + E	200-415	50-60	6 ■	10	18.01

WALL SOCKET 16A - 63A IP44

For wall and machine mounting with cable connection from top & back

Connectable cable size:

16A: 1-2,5 mm². Solid cable 1-4 mm²

32A: 2,5-6 mm². Solid cable 2,5-10 mm²

63A: 6-16 mm² and solid cable 6-25 mm²

Supplied with cable gland entry

Degree of protection IP44



UI 232-6 S-RU

Type	Poles	Operating Voltage V	Frequency Hz	Clock pos. Colour code	Package size	Trade Price
UI 216-4 S - RU	3 2p + E	100-130	50-60	4 ■	10	7.18
UI 216-6 S - RU		200-250	50-60	6 ■	10	7.18
UI 232-4 S - RU		100-130	50-60	4 ■	10	8.70
UI 232-6 S - RU		200-250	50-60	6 ■	10	11.82
UI 263-6 S - RU	4 3p + E	200-250	50-60	6 ■	2	43.01
UI 316-4 S - RU		100-130	50-60	4 ■	10	9.48
UI 316-6 S - RU		380-415	50-60	6 ■	10	7.32
UI 332-6 S - RU		380-415	50-60	6 ■	10	8.50
UI 363-6 S - RU	5 3p + N + E	380-415	50-60	6 ■	2	43.76
UI 416-6 S - RU		200-415	50-60	6 ■	10	9.46
UI 432-6 S - RU		200-415	50-60	6 ■	10	12.42
UI 463-6 S - RU		200-415	50-60	6 ■	2	47.24



UI 216-4 DE-RU

Wall sockets with double entry

Type	Poles	Operating Voltage V	Frequency Hz	Clock pos. Colour code	Package size	Trade Price
UI 216-4 DE - RU	3 2p + E	100-130	50-60	4 ■	10	12.03
UI 216-6 DE - RU		200-250	50-60	6 ■	10	10.01
UI 232-6 DE - RU		200-250	50-60	6 ■	10	13.27
UI 263-6 S - RU		200-250	50-60	6 ■	2	43.01
UI 316-6 DE - RU	4 3p + E	380-415	50-60	6 ■	10	11.89
UI 332-6 DE -RU		380-415	50-60	6 ■	10	13.47
UI 363-6 S - RU		380-415	50-60	6 ■	2	43.76
UI 416-6 DE - RU		200-415	50-60	6 ■	10	12.61
UI 432-6 DE - RU	5 3p + N + E	200-415	50-60	6 ■	10	14.13
UI 463-6 S - RU		200-415	50-60	6 ■	2	47.24

WALL SOCKET WATERTIGHT 16A - 125A IP67

For wall mounting with cable connection from top & back

Connectable cable size:

16A: 1-2,5 mm² & Solid cable 1-4 mm²

32A: 2,5-10 mm² & Solid cable 2,5-10 mm²

63A: 6-16 mm² & Solid cable 6-25 mm²

125A: 5 x 50 mm² to terminal block

Flexible 16-50 mm² and solid cable 16-70 mm²

Degree of protection IP67



UIV 316-6S - RU

Type	Poles	Operating Voltage V	Frequency Hz	Clock pos. Colour code	Package size	Trade Price
UIV 216-4S - RU	3 2p + E	100-130	50-60	4 ■	5	14.49
UIV 216-6S - RU		200-250	50-60	6 ■	5	12.69
UIV 232-4S - RU		100-130	50-60	4 ■	5	16.40
UIV 232-6S - RU		200-250	50-60	6 ■	5	16.91
UIV 263-4S - RU		100-130	50-60	4 ■	2	53.31
UIV 263-6S - RU		200-250	50-60	6 ■	2	41.71
UIV 2125-6S - RU	4 3p + E	200-250	50-60	6 ■	1	114.40
UIV 316-4S - RU		100-130	50-60	4 ■	5	17.91
UIV 316-6S - RU		380-415	50-60	6 ■	5	14.65
UIV 332-6S - RU		380-415	50-60	6 ■	5	18.20
UIV 363-6S - RV		380-415	50-60	6 ■	2	43.65
UIV 3125-6S - RU		380-415	50-60	6 ■	1	119.39
UIV 416-6S - RU	5 3p + N + E	200-415	50-60	6 ■	5	15.97
UIV 432-6S - RU		200-415	50-60	6 ■	5	18.41
UIV 463-6S - RU		200-415	50-60	6 ■	2	63.05
UIV 4125-6S - RU		200-415	50-60	6 ■	1	131.80

WALL INLET 16A - 63A IP44

For wall mounting with cable connection possible from top & bottom

Connectable cable size:

16A: 1-2,5 mm² & Solid cable 1-4 mm²

32A: 2,5-6 mm² & Solid cable 2,5-10 mm²

63A: 6-25 mm²

Supplied with sealed gland entry M40

Degree of protection IP44.



II 216-4S - RI



II 232-6S -RI

Type	Poles	Operating Voltage V	Frequency Hz	Clock pos. Colour code	Package size	Trade Price	
II 216-4 S - RI	3 2p + E	100-130	50-60	4 ■	10	10.20	
II 216-6 S - RI		200-250	50-60	6 ■	10	9.26	
II 232-4 S - RI		100-130	50-60	4 ■	10	13.43	
II 232-6 S - RI		200-250	50-60	6 ■	10	12.74	
II 263-6 S - RI		200-250	50-60	6 ■	2	57.43	
II 316-4 S - RI		4 3p + E	100-130	50-60	4 ■	10	13.89
II 316-6 S - RI	380-415		50-60	6 ■	10	10.89	
II 332-6 S - RI	380-415		50-60	6 ■	10	13.17	
II 416-6 S - RI	5 3p + N + E		200-415	50-60	6 ■	10	11.82
II 432-6 S - RI			200-415	50-60	6 ■	10	13.89
II 463-6 S - RI			380-415	50-60	6 ■	2	57.36

INDUSTRIAL PLUGS & SOCKETS

WALL INLET WATERTIGHT 16A - 125A IP67

Waterproof inlet for wall mounting

Connectable cable size:

16A: 1-2,5 mm² & 1-4 mm² for solid cable

32A: 2,5-6 mm² & for solid cable 2,5-10 mm²

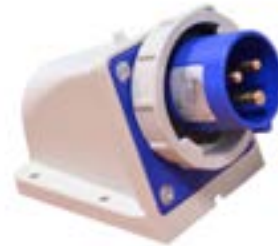
63A: 6-16 mm² & for solid cable 6-25 mm²

125A: 16-50 mm² & for solid cable 16-70 mm²

Degree of protection IP67.



IIV 463-6S - RI



IIV 216-6S - RI

Type	Poles	Operating Voltage V	Frequency Hz	Clock pos. Colour code	Package size	Trade Price	
IIV 216-4S - RI	3 2p + E	100-130	50-60	4 ■	10	25.24	
IIV 216-6S - RI		200-250	50-60	6 ■	10	24.90	
IIV 232-4S - RI		100-130	50-60	4 ■	10	30.07	
IIV 232-6S - RI		200-250	50-60	6 ■	10	33.59	
IIV 263-4S - RI		100-130	50-60	4 ■	2	77.67	
IIV 263-6S - RI		200-250	50-60	6 ■	2	56.16	
IIV 2125-6 - RI		200-250	50-60	6 ■	1	118.12	
IIV 332-6S - RI		4 3p + E	380-415	50-60	6 ■	10	32.33
IIV 363-6S - RI			380-415	50-60	6 ■	2	49.39
IIV 3125-6S - RI			380-415	50-60	6 ■	1	147.72
IIV 416-6S - RI	200-415		50-60	6 ■	10	25.42	
IIV 432-6S - RI	5 3p + N + E	200-415	50-60	6 ■	10	26.69	
IIV 463-6S - RI		200-415	50-60	6 ■	2	54.70	
IIV 4125-6S - RI		200-415	50-60	6 ■	1	126.82	

CONNECTION OUTLETS - 3 WAY 16A IP44

With IEC-CEE 16A socket inlet and 3 x 16A socket outlets
 Connectable cable size: 1,5-4 mm²
 Degree of protection IP44



Type	Poles	Connectors	Operating Voltage V	Frequency Hz	Clock pos.- Colour code	Package size	Trade Price
P3 S216-4S	3	3 x 16A socket outlets	110-130	50-60	4 ■	1	55.62
P3 S216-6S	3	3 x 16A socket outlets	200-250	50-60	6 ■	1	50.56

CONNECTION OUTLETS - 3 WAY 16A IP67

With IEC-CEE 16A socket inlet and 3 x 16A socket outlets
 Connectable cable size: 1,5-4 mm²
 Degree of protection IP67



Type	Poles	Connectors	Operating Voltage V	Frequency Hz	Clock pos. Colour code	Package size	Trade Price
PV3 S216-4S	3	3 x 16A socket outlets	110-130	50-60	4 ■	1	74.28
PV3 S216-6S	3	3 x 16A socket outlets	200-250	50-60	6 ■	1	67.55

ADAPTOR 16A - 13A BS IP44

With IEC-CEE 16A socket inlet & 3-pin BS 13A socket outlet
 Connectable cable size: 1,5-4 mm²
 Degree of protection IP44



Type	Poles	Operating Voltage V	Frequency Hz	Clock pos. Colour code	Package size	Trade Price
II216-6-13A	3	200-250	50-60	6 ■	10	20.00

PANEL MOUNTED SOCKET WITH STRAIGHT MOUNTING PLATE 16A - 63A IP44

For panel mounting

Connectable cable size:

16A: 1-2,5 mm² & solid cable 1-4 mm².

32A: 2,5-6 mm² & solid cable 2,5-10 mm²

63A: 6-16 mm² & solid cable 6-25 mm²

Degree of protection IP44



UI 316-4S



UI L 216-6S

Type	Poles	Operating Voltage V	Frequency Hz	Clock pos. Colour code	Package size	Trade Price
UIL 216-4 S	3 2p + E	100-130	50-60	4	10	4.39
UIL 216-6 S		200-250	50-60	6	10	4.01
UI 216-4 S		100-130	50-60	4	10	4.36
UI 216-6 S		200-250	50-60	6	10	4.01
UI 232-4 S		100-130	50-60	4	10	5.89
UI 232-6 S		200-250	50-60	6	10	5.49
UI 263-4 S	4 3p + E	100-130	50-60	4	2	45.07
UI 263-6 S		200-250	50-60	6	2	34.64
UI 316-6 S		380-415	50-60	6	10	5.01
UI 332-6 S		380-415	50-60	6	10	6.42
UI 363-6 S		380-415	50-60	6	2	33.39
UI 416-6 S		200-415	50-60	6	10	5.22
UI 432-6 S	5 3p + N + E	200-415	50-60	6	10	7.43
UI 463-6 S		200-415	50-60	6	2	36.74

PANEL MOUNTED SOCKET WITH ANGLED MOUNTING PLATE 16A - 63A IP44

For panel mounting

Connectable cable size:

16A: 1-2,5 mm² & 1-4 mm² for solid cable

32A: 2,5-6 mm² & 2,5-10 mm² for solid cable

63A: 6-16 mm² & 6-25 mm² for solid cable

Degree of protection IP44



UIS 263-6S



UIS 316-6S

Type	Poles	Operating Voltage V	Frequency Hz	Clock pos.- colour code	Package size	Trade Price
UIS 216-4 S	3 2p + E	100-130	50-60	4	10	4.29
UIS 216-6 S		200-250	50-60	6	10	3.92
UIS 232-4 S		100-130	50-60	4	10	6.91
UIS 232-6 S		200-250	50-60	6	10	5.89
UIS 263-6 S	4 3p + E	200-250	50-60	6	2	33.15
UIS 316-6 S		380-415	50-60	6	10	4.92
UIS 332-6 S		380-415	50-60	6	10	6.08
UIS 363-4 S		100-130	50-60	4	2	35.47
UIS 363-6 S	5 3p + N + E	380-415	50-60	6	2	35.46
UIS 416-6 S		200-415	50-60	6	10	5.11
UIS 432-6 S		200-415	50-60	6	10	7.27
UIS 463-6 S		200-415	50-60	6	2	36.76

PANEL MOUNTED SOCKET WATERTIGHT - ANGLED MOUNTING PLATE 16A - 125A IP67

Watertight socket for panel mounting

Connectable cable size:

16A: 1-2,5 mm² & 1-4 mm² for solid cable

32A: 2,5-6 mm² & 2,5-10 mm² for solid cable.

63A: 6-16 mm² & 6-25 mm² for solid cable

125A: 16-50 mm² & 16-70 mm² for solid cable

Supplied with gasket

Degree of protection IP67



UISV 263-6S



UIV 232-4S

Type	Poles	Operating Voltage V	Frequency Hz	Clock pos. Colour code	Package size	Trade Price
UISV 216-4S	3 2p + E	100-130	50-60	4 ■	10	9.99
UISV 216-6S		200-250	50-60	6 ■	10	10.02
UISV 232-4S		100-130	50-60	4 ■	10	12.02
UISV 232-6S		200-250	50-60	6 ■	10	12.02
UISV 263-6S		200-250	50-60	6 ■	2	35.00
UISV 2125-6S		200-250	50-60	6 ■	2	66.83
UISV 316-6S	4 3p + E	380-415	50-60	6 ■	10	10.35
UISV 332-6S		380-415	50-60	6 ■	10	12.68
UISV 3125-6S		380-415	50-60	6 ■	2	67.65
UISV 416-6S	5 3p + N + E	200-415	50-60	6 ■	10	11.40
UISV 432-6S		200-415	50-60	6 ■	10	14.03
UISV 463-6S		200-415	50-60	6 ■	2	38.76
UISV 4125-6S		200-415	50-60	6 ■	2	71.33

PANEL MOUNTED INLET WITH STRAIGHT MOUNTING PLATE 16A - 63A IP44

For panel mounting
 Connectable cable size:
 16A: 1,5-4 mm²
 32A: 2,5-10 mm²
 63A: 6-25 mm²
 Degree of protection IP44



II 416-6S

Type	Poles	Operating Voltage V	Frequency Hz	Clock pos. Colour code	Package size	Trade Price
II 216-4 S	3	100-130	50-60	4 ■	10	4.83
II 216-6 S		200-250	50-60	6 ■	10	4.83
II 232-4 S	2p+E	100-130	50-60	4 ■	10	6.97
II 232-6 S		200-250	50-60	6 ■	10	7.02
II 263-6 S	4	200-250	50-60	6 ■	4	33.94
II 316-4 S		100-130	50-60	4 ■	10	6.90
II 316-6 S	3p + E	380-415	50-60	6 ■	10	6.02
II 332-6 S		380-415	50-60	6 ■	10	8.13
II 416-6 S	5	200-415	50-60	6 ■	10	6.02
II 432-6 S		3p+N+E	200-415	50-60	6 ■	10

PANEL MOUNTED INLET WATERTIGHT - ANGLED MOUNTING PLATE 63A + 125A IP67

Waterproof inlet for panel mounting
 Connectable cable size:
 63A: 6-16 mm² and for solid cable 6-25 mm²
 125A: 16-50 mm² and for solid cable 16-70 mm²
 Supplied with gasket
 Degree of protection IP67



IIV 263-4

Type	Poles	Operating Voltage V	Frequency Hz	Clock pos. Colour code	Package size	Trade Price
IIV 263-4	3	100-130	50-60	4 ■	2	56.18
IIV 263-6		200-250	50-60	6 ■	2	42.29
IIV 2125-4	2p + E	100-130	50-60	4 ■	2	106.71
IISV 2125-6S		200-250	50-60	6 ■	2	107.91
IIV 363-6	4	380-415	50-60	6 ■	2	49.14
IIV 3125-6		3p + E	380-415	50-60	6 ■	2
IIV 463-6	5	200-415	50-60	6 ■	2	49.14
IIV 4125-6		3p + N + E	200-415	50-60	6 ■	2

COMBINATION UNITS 16A - 32A IP44

16A:

Connectable cable size: 1-2.5mm²

Solid cable 2.5-6mm²

32A:

Connectable cable size: 2.5-6mm²

Solid cable 2.5-10mm²



Degree of protection IP44

Type	Poles	Operating Voltage V	Frequency Hz	Clock pos. Colour code	Package size	Trade Price
Wall Socket with 4 Module Window 16A-32A IP44						
URBB 216-4S		100-130	50-60	4 ■	1	74.00
URBB 216-6S	3	200-250	50-60	6 ■	1	68.31
URBB 232-4S	2p+E	100-130	50-60	6 ■	1	83.35
URBB 232-6S		200-250	50-60	4 ■	1	76.03
URBB 316-6S	4	380-415	50-60	4 ■	1	69.53
URBB 332-6S	3p + E	380-415	50-60	6 ■	1	76.44
URBB 416-6S	5	200-415	50-60	6 ■	1	69.94
URBB 432-6S	3p+N+E	200-415	50-60	6 ■	1	76.85

For Interlocked Sockets with RCCB see page 61

16A:

Connectable cable size: 1.5-2.5mm²

Solid cable 1.5-4mm²

32A:

Connectable cable size: 2.5mm²

Solid cable 2.5-10mm²



Degree of protection IP44

Type	Poles	Operating Voltage V	Frequency Hz	Clock pos. Colour code	Package size	Trade Price
Interlocked Socket Outlet IP44 16A-32A						
UBB 216-4S		100-130	50-60	4 ■	1	61.60
UBB 216-6S	3	200-250	50-60	6 ■	1	58.96
UBB 232-4S	2p+E	100-130	50-60	4 ■	1	62.82
UBB 232-6S		200-250	50-60	6 ■	1	61.60
UBB 316-6S	4	380-415	50-60	6 ■	1	69.11
UBB 332-6S	3p + E	380-415	50-60	6 ■	1	65.05
UBB 416-6S	5	200-415	50-60	6 ■	1	69.94
UBB 432-6S	3p+N+E	200-415	50-60	6 ■	1	84.58

INTERLOCKED SOCKETS OUTLETS WATERTIGHT 16A - 125A IP67

Watertight socket for wall mounting with cable connection from top & bottom
Connectable cable size:

- 16A: 1-2,5 mm² and for solid cable 1-4 mm²
- 32A: 2,5-6 mm² and for solid cable 2,5-10 mm²
- 63A: 6-16 mm² and for solid cable 6-25 mm²
- 125A: 50 mm²

Degree of protection IP67



UBV 263-6SI



UBV 3125-6

Type	Poles	Operating Voltage V	Frequency Hz	Clock pos. Colour code	Package size	Trade Price
16A, 32A 63A						
UBC 216-4S	3 2p + E	100-130	50-60	4 ■	1	68.93
UBC 216-6S		200-250	50-60	6 ■	1	68.93
UBC 232-4S		100-130	50-60	4 ■	1	72.43
UBC 232-6S		200-250	50-60	6 ■	1	72.43
UBV 263-6SI		200-250	50-60	6 ■	1	199.84
UBC 316-6S	4 3p + E	380-415	50-60	6 ■	1	70.37
UBC 332-6S		380-415	50-60	6 ■	1	77.28
UBV 363-6SI		380-415	50-60	6 ■	1	208.71
UBC 416-6S	5 3p + N + E	230-400	50-60	6 ■	1	74.13
UBC 432-6S		230-400	50-60	6 ■	1	105.70
UBV 463-6S		230-400	50-60	6 ■	1	209.23

Type	Poles	Operating Voltage V	Frequency Hz	Clock pos. Colour code	Package size	Trade Price
125A						
UBV 2125-6S	3 2p + E	200-250	50-60	6 ■	1	1,001.77
UBV 3125-6S	4 3p + E	380-415	50-60	6 ■	1	1,021.73
UBV 4125-6S	5 3p + N + E	200-415	50-60	6 ■	1	1,052.41

INTERLOCKED COMBINATION UNITS WATERTIGHT 16A - 125A IP67

Combination unit with socket outlet in watertight design.
 Cable connection possible from top and bottom.
 Can be equipped with components up to a max of 5-8 modules. (100 mm).
 Connectable cable size:

- 16A: 1-2,5 mm² and for solid cable 1-4 mm²
- 32A: 2,5-6 mm² and for solid cable 2,5-10 mm²
- 63A: 6-16 mm² and for solid cable 6-25 mm²
- 125A: 50 mm²

Degree of protection IP67.

Components sold separately.



URBBV 363-6S

Type	Poles	Module space for Components	Operating Voltage V	Clock pos. Colour code	Package size	Trade Price
------	-------	-----------------------------	---------------------	------------------------	--------------	-------------

16A

URBBV 216-4S	3	5	100-130	4	1	105.72
URBBV 216-6S	2p + E	5	200-250	6	1	119.50
URBBV 316-6S	4 3p + E	5	380-415	6	1	116.07
URBBV 416-4S	5	5	100-130	4	1	111.77
URBBV 416-6S	3p + N + E	5	200-415	6	1	111.77

32A

URBBV 232-4S	3	5	100-130	4	1	158.88
URBBV 232-6S	2p + E	5	200-250	6	1	158.88
URBBV 332-6S	4 3p + E	5	380-415	6	1	164.93
URBBV 432-6S	5 3p + N + E	5	200-415	6	1	169.90

63A

URBBV 263-6S	3 2p + E	7	200-250	6	1	246.57
URBBV 363-6S	4 3p + E	7	380-415	6	1	255.44
URBBV 463-6S	5 3p + N + E	7	200-415	6	1	264.34

COMBINATION UNITS 16A - 32A IP44 complete with RCCB

Type	Poles	Operating Voltage V	Module space for Components	Clock pos. Colour code	Package size	Trade Price
16 Amp IP44						
URBB 216-6SCR	2p+E	200-250	5	6 ■	1	104.11
URBB 316-6SCR	4 3p + E	380-415	5	6 ■	1	126.87
URBB 416-6SCR	3p + N + E	200-415	5	6 ■	1	127.30
32 Amp IP44						
URBB 232-6SCR	2p+E	200-250	5	6 ■	1	111.84
URBB 332-6SCR	4 3p + E	380-415	5	6 ■	1	133.79
URBB 432-6SCR	5 3p+N+E	200-415	5	6 ■	1	134.20



INTERLOCKED COMBINATION UNITS 16A - 63A IP67 complete with RCCB

Type	Poles	Operating Voltage V	Module space for Components	Clock pos. Colour code	Package size	Trade Price
16A IP67						
URBBV 216-6SCR	2p+E	200-250	5	6 ■	1	155.31
URBBV 316-6SCR	4 3p + E	380-415	5	6 ■	1	173.43
URBBV 416-6SCR	3p + N + E	200-415	5	6 ■	1	169.11
32A IP67						
URBBV 232-6SCR	2p+E	200-250	5	6 ■	1	194.69
URBBV 332-6SCR	4 3p + E	380-415	5	6 ■	1	222.27
URBBV 432-6SCR	5 3p+N+E	200-415	5	6 ■	1	227.25
63A IP67						
URBBV 263-6SCR	3 2p + E	200-250	7	6 ■	1	284.84
URBBV 363-6SCR	4 3p + E	380-415	7	6 ■	1	331.46
URBBV 463-6SCR	5 3p+N+E	200-415	7	6 ■	1	340.37



GARO ENTERTAINMENT RANGE



When there is a special requirement for top quality and invisibility e.g. at various events in the entertainment arena, there is a need for 'invisible' electricity. Cables, sockets and terminal boxes need to be discreet and not be seen.

GARO has a special range comprising the more commonly used plugs and sockets

Connectors are screw type simple connect as with the GARO Entertainment Range.

Degree of Protection:

- IP44 16 - 32A
- IP67 63 - 125 A

ENTERTAINMENT RANGE PLUGS & SOCKETS Type 16A & 32A IP44

Connectable cable size:
 16A: 1-2,5 mm²
 32A: 2,5-6 mm²
 Degree of Protection IP44



S 216-6 S - B



P 316 - 6 S - B

ENTERTAINMENT RANGE PLUGS & SOCKETS 63A & 125A WATERTIGHT IP67

PLUGS & SOCKETS 63A and 125A
 Connectable cable size:
 63A: 6-16 mm²
 125A: 16-50 mm²
 Degree of protection IP67



S 4125 - 6 S+B



P 4125 6 S+B

ENTERTAINMENT RANGE PLUGS & SOCKETS Type 16A & 32A IP44

PLUGS IP44	Poles	Operating Voltage V	Frequency Hz	Clock pos. Colour code	Package size	Trade Price
16 A						
P 216-6 S-B	3- 2p+E	200-250	50-60	6 ■	10	3.89
P 316-6 S-B	4- 3p+E	380-415	50-60	6 ■	10	5.02
P 416-6 S-B	5- 3p+N+P	200-415	50-60	6 ■	10	5.49
32 A						
P 232-6 S-B	3- 2p+E	200-250	50-60	6 ■	10	7.18
P 332-6 S-B	4- 3p+E	380-415	50-60	6 ■	10	7.63
P 432-6 S-B	5- 3p+N+P	200-415	50-60	6 ■	10	8.06

SOCKETS IP44	Poles	Operating Voltage V	Frequency Hz	Clock pos. Colour code	Package size	Trade Price
16 A						
S 216-6 S-B	3- 2p+E	200-250	50-60	6 ■	10	5.49
S 316-6 S-B	4- 3p+E	380-415	50-60	6 ■	10	6.95
S 416-6 S-B	5- 3p+N+P	200-415	50-60	6 ■	10	8.25
32 A						
S 232-6 S-B	3- 2p+E	200-250	50-60	6 ■	10	9.42
S 332-6 S-B	4- 3p+E	380-415	50-60	6 ■	10	9.58
S 432-6 S-B	5- 3p+N+P	200-415	50-60	6 ■	10	10.77

ENTERTAINMENT RANGE PLUGS & SOCKETS 63A & 125A WATERTIGHT IP67

PLUGS IP67	Poles	Operating Voltage V	Frequency Hz	Clock pos. Colour code	Package size	Trade Price
63 A						
P 263-6 S-B	3- 2p+E	200-250	50-60	6 ■	2	43.10
P 363-6 S-B	4- 3p+E	380-415	50-60	6 ■	2	44.41
P 463-6 S-B	5- 3p+N+P	200-415	50-60	6 ■	2	50.10
125 A						
P 2125-6 S-B	3- 2p+E	200-250	50-60	6 ■	2	99.32
P 3125-6 S-B	4- 3p+E	380-415	50-60	6 ■	2	104.53
P 4125-6 S-B	5- 3p+N+P	200-415	50-60	6 ■	2	115.00

SOCKETS IP67	Poles	Operating Voltage V	Frequency Hz	Clock pos. Colour code	Package size	Trade Price
63 A						
S 263-6 S-B	3- 2p+E	200-250	50-60	6 ■	2	52.71
S 363-6 S-B	4- 3p+E	380-415	50-60	6 ■	2	54.46
S 463-6 S-B	5- 3p+N+P	200-415	50-60	6 ■	2	60.09
125 A						
S 2125-6 S-B	3- 2p+E	200-250	50-60	6 ■	2	108.87
S 3125-6 S-B	4- 3p+E	380-415	50-60	6 ■	2	115.00
S 4125-6 S-B	5- 3p+N+P	200-415	50-60	6 ■	2	126.30

Terms and Conditions of Sale



1. DEFINITIONS

In these terms and conditions, the following words shall have the following meanings: -

'The Company' shall mean Garo Electric Ltd and its successors in Title. 'The Customer' shall mean the person, firm or company offering to purchase goods from the Company and its successors in Title. 'Goods' shall mean the articles and services which are the subject matter of the contract between the Company and the Customer.

2. GENERAL

All business undertaken by the Company is undertaken on the terms and conditions herein contained and any variations will only be binding on the parties hereto if such variation is in writing and signed on behalf of the Company. Any order placed by a customer is deemed to be upon the terms and conditions herein contained.

3. SETTLEMENT TERMS

All items are strictly net and due for payment 30 days after date of the invoice unless otherwise specified in writing by the Company. The Customer shall not be entitled to make any deductions whether by reason of set-off or for any other reason.

4. PRICES – EXCLUSIVE OF V.A.T.

All quotations are given at current prices but are subject to alterations without notice in accordance with prices ruling at time of delivery. The Company shall be entitled to recover from the Customer by way of addition to prices, such amounts which the Company may become liable to pay in respect of Value Added Tax or other legally imposed Tax in relation to the goods, also currency and other Surcharges will be charged, where applicable, at the rate ruling at date of dispatch.

5. CARRIAGE

The Company normally makes no charge for delivery from its warehouse within the usual van delivery area when delivered by its vehicles but reserves the right to charge carriage on deliveries by whatever means of transport outside such usual delivery areas. Where the goods are specially ordered from manufacturers, the Company reserves the right to pass on any carriage and customs clearance charges as may arise.

6. GUARANTEE

The Company gives no guarantee or warranty whether expressed or implied in relation to the Goods, but the Company shall do everything within its power to protect the Customers interests and to that extent shall assign to the Customer the benefit of such guarantee or warranty (if any) as may be given by the manufacturers in relation to the Goods. The Company does not accept liability for any consequential damage howsoever arising from the purchase by the Customer of the Goods whether the same may arise out of any use of the Goods or the installation of the same.

7. DELIVERY DATES

Whilst the Company shall always do its best to comply with a date quoted for delivery of goods it accepts no responsibility for loss or damage arising from failure to comply.

8. RETURNS

(a) Goods correctly supplied may not be returned without the Company's agreement in writing. Goods so returned must be consigned Carriage Paid and accompanied by a Packing Note stating the Company's Delivery Note Number. The Company reserves the right to make a re-stocking charge. Goods will be accepted only if returned in perfect condition and in unopened and perfect packaging. A clear and authorised signature must be obtained from the Company.

(b) GARO branded products (EEE) can be returned to GARO, carriage paid, or WEEE recycling, subject to national directives.

(a) Any claim relating to goods delivered under this contract shall be notified to the Company in writing within seven (7) days from the date on which the said goods are received by the Customer or his agent and the Customer shall afford the Company reasonable facilities for examining the goods before they have been disposed of, or in any way altered. All goods damaged in transit and accepted in that condition by the Customer shall not be the subject of any claim hereunder.

(b) Any claim or claims in respect of goods delivered under this contract shall not be grounds for withholding payment of accounts and shall not give any right of set-off against payment due to the Company.

(c) No claim for damages to or shortages of goods during transit will be considered unless the Company and the carriers are advised in writing within seven (7) days of delivery of goods and no claim for non-delivery will be considered unless the Company and the carriers are advised within ten (10) days from date of dispatch of goods.

8.1 STANDARD TERMS

1. All goods returned to GARO must be approved by GARO. A returns number issued by GARO must be noted on any return documentation. Product returns without a valid returns number will be rejected and returned at the buyer's expense.

2. A returns number can be obtained by emailing returns@garo.co.uk or by contacting the main office.

3. For returns accepted by Garo, the buyer will be liable for the return cost and risk of damage/loss of the goods.

4. Goods which the customer considers to be faulty can be returned subject to 1.

a) These products will be individually tested. If the product is found to be faulty, the customer will be informed, and a credit note will be issued.

b) No credit will be issued for products found not to be faulty, and the products will be made available for collection by the customer.

c) Goods will only be stored for 30 days after the customer has been informed.

5. Garo reserve the right to reject a claim within 28 days if no fault is found.

6. Garo will not incur any costs for installing or fitting replacement products.

7. All returns must include a copy of the Garo returns document and the returns number clearly stated on the package. Garo will reject returns without this information.

8.2 DAMAGED ITEMS

1. For items received damaged, the buyer must contact Garo within 24 hours of the goods being received. Evidence of the damage must be provided, along with all delivery documentation. A replacement product will be provided if satisfactory evidence is supplied.

2. In the case of quantity discrepancies, Garo must be informed within 24 hours of receiving the goods. Garo will then investigate after receiving delivery documentation from the buyer. If found to be correct –

a) The missing items will be sent (at Garo's cost) to the buyer.

b) For over-deliveries, an invoice will need to be raised, or Garo will arrange for the collection of the goods.

3. If an incorrect item is received, Garo will arrange for the collection and replacement product to be delivered. All evidence must be sent to Garo within 24 hours of delivery.

8.3 STOCK CLEANSE

1. Product returns as part of a stock cleanse will be subject to a re-stocking charge or an order in lieu. This must be agreed before any stock return. The products returned must be in perfect condition.

This applies to the product and packaging. EV chargers & assembled products are excluded from any stock cleanse. Products older than 6 months are not eligible for stock cleanse.

2. Stock cleanse must be requested in writing to the area sales rep. If this has not been approved, the return will be rejected.

3. For returns accepted by Garo, the buyer will pay for the return cost and risk of damage/loss of the goods.

8.4 WEE

1. GARO branded products (EEE) can be returned to GARO, carriage paid, for WEEE recycling, subject to national directives.

9. ORDER CANCELLATION: BESPOKE PRODUCTS AND CUSTOM - MADE PRODUCTS

All goods are custom made to order specification. Buyer agrees that an order shall in no event be subject to cancellation or changes and shall be non-refundable, except by prior written consent of the Seller.

Orders for these types of goods may not be cancelled / amended by the buyer without payment to Garo in full for the order. Garo shall, in good faith, use commercially reasonable efforts to mitigate the costs of cancellation of any Purchase Order. This order may be cancelled or delayed by the Seller in whole or in part without any liability if due to any cause beyond the control of the Seller. Refunds will be subject to Garo's discretion and conditions of cancellation.

Standard Products (as featured in the Trade Price List)

Buyer may cancel any order (or any part thereof) for goods by giving Garo written notice of such cancellation at least 15 days prior to the shipping date. In the event of such cancellation, Buyer will have no rights in partially completed goods.

10. RESCHEDULING OF ORDERS

Buyer may at any time, upon not less than thirty (30) days written notice to Garo, reschedule and/or postpone the delivery date relating to an order (or any part thereof) for up to thirty (30) days. The postponement of delivery to a date more than thirty (30) days from the delivery date specified in the initial order shall be deemed a cancellation of such order. BUYER MAY NOT POSTPONE THE DELIVERY DATE MORE THAN ONCE WITH RESPECT TO ANY ORDER. If the Distributor cancels a previously rescheduled delivery of Equipment, the applicable cancellation charges shall be based on the delivery date specified in the initial order submitted by Buyer for such delivery.

11. PACKING AND TRANSIT

Goods received damaged should be signed for as 'Damaged', otherwise claims in this regard cannot be submitted. Customers are asked to note the pre-scribed periods for notification of damage to or shortage and non-delivery of goods and the submission of claims in respect thereof. The Company shall not be liable for any loss resulting from Customers' failure to comply with the requirements of the Railway Executive, Haulage Companies and Post Regulations and the Customer undertakes to indemnify the Company against such loss (if any).

12. ORDERS

Written confirmation of telephone orders should be clearly marked as such, otherwise the Company cannot be responsible should the order be duplicated. The Company reserves the right to refuse any order placed, or to refuse cancellation of any order, or to suspend delivery of any order from time to time, if the account is in arrears.

13. WAIVER

A waiver by the Company at any term or condition shall not constitute a general waiver of such term or condition.

14. OWNERSHIP

(a) The property in the goods shall not be deemed to have passed to the Customer until the goods and any debts owing to the Company whether arising from this contract or otherwise have been paid for and discharged in full.

(b) In the meantime, the goods shall remain the sole property of the Company and the Customer shall be bailee thereof.

(c) If the Customer fails to pay any sums due in accordance with the terms of this agreement the Company may after giving seven days' notice in writing to the Customer take possession of the goods and may for that purpose, by himself his servants or agents, enter upon any land or premises on or in which the goods or any part of them are believed by the Company to be situated.

(d) The Customer agrees not to sell, assign, sub-let or otherwise part with the possession of the goods until the property in the goods passes to the Customer in accordance with the provisions of paragraphs (a) and (b)

(e) The risk of any loss or damage to or deterioration of the goods from whatever cause shall be borne by the Customer from when the Customer, his servants, licensees or agents receive possession of the goods (f) If payment is overdue and not discharged, the Company may without prejudice to any of its rights and remedies and with due warning to the Customer by registered mail, recover and resell any or all such goods and may enter upon the Customer's premises for that purpose. Recovery costs will become the liability of the Customer and shall include all labour, tools, plant hire and all other relevant charges-costs.

15. CHOICE OF LAW

These conditions and the contract shall be subject to and construed in accordance with the laws of England and Wales. The Customer submits to the jurisdiction of the Courts of England and Wales.



Plug into the future.

New!
Charging Range

GARO[®]

GARO Electric Ltd

Unit 16 Urban Express Park
Aston Hall Road
Birmingham
B6 7FH

**MADE IN
EU**
MANUFACTURED
IN THE EU


COMPREHENSIVE
WARRANTIES

80YR
80 YEARS
OF EXPERTISE

Sweden • Norway • Finland • Poland • Ireland • UK

Tel: 0121 3899 444
sales@garo.co.uk
www.garo.co.uk
www.garoelectric.com

